

Magnificent Château with 11 bedrooms set in an 11 acre park with a lake, heated pool and 2 guest houses



INFORMATION

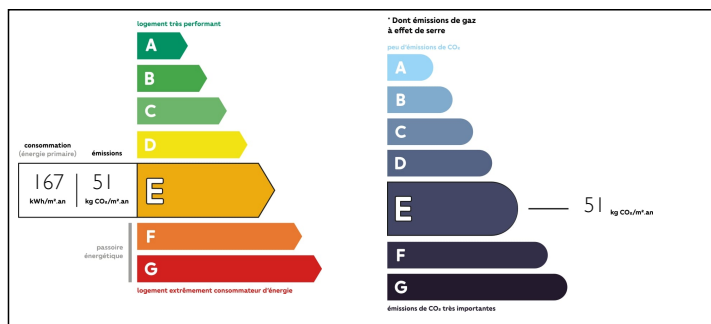
Town:	Tournon-Saint-Pierre
Department:	Indre-et-Loire
Bed:	11
Bath:	11
Floor:	1169 m2
Plot Size:	44747 m2



IN BRIEF

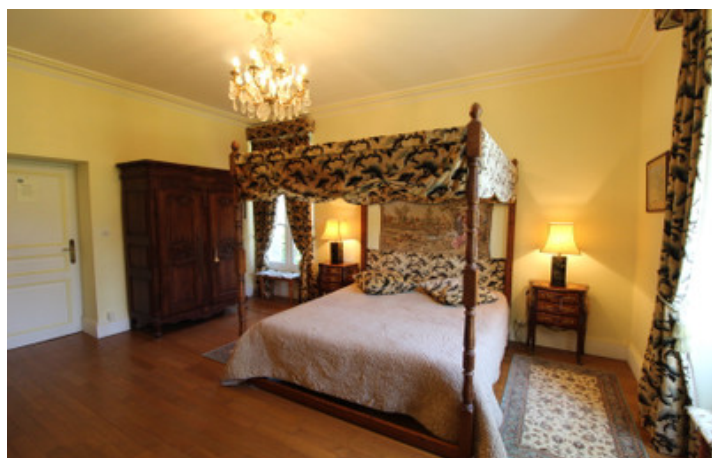
This beautiful château dating from around the turn of the 18th century was built on the site of a previous chateau destroyed during the revolution and sits in fully enclosed parkland of approximately 11 acres with a lake and several huge trees dating from around the same time as when the property was constructed. It has a 15m x 6m heated swimming pool and 11 bedrooms all with ensuite facilities. Also in the grounds are a 5 bed property and a 3 bed guardians property as well as several outbuildings. It is situated towards the southern end of Touraine, in an excellent location close to all of the local amenities Yzeures sur Creuse has to offer including bars, restaurants, supermarket, school, library, museum, church, bakery etc. The town is only 25 km from the nearest TGV station and A10 motorway at Châtellerault and approximately 1 hr from 2 Ryanair served...

ENERGY - DPE



NB. Quoted prices relate to euro transactions. Fluctuations in exchange rates are not the responsibility of the agency or those representing it. The agency and its representatives are not authorised to make or give guarantees relating to the property. These particulars do not form part of any contract but are to be taken as a general representation of the property. Any areas, measurements or distances are approximate. Text, photographs and plans, where applicable, are for guidance only. Leggett and its representatives have not tested services, equipment or facilities and cannot guarantee the same.

Particulars for off-plan purchases are intended as a guide only. Final finishes to the property may vary. Purchasers are advised to engage a solicitor to check the plans and specifications as laid out in their purchase contract with the developer.



DESCRIPTION

This beautiful ornate château dating from around the turn of the 18th century sits in fully enclosed parkland of approximately 11 acres with a lake and several huge trees dating from around the same time as when the property was constructed. It has a 15m x 6m heated swimming pool and 11 bedrooms all with ensuite facilities. Also in the grounds are a 5 bed property and a 3 bed guardians property as well as several outbuildings. The property is accessed via electrically operated gates and a driveway that leads past the guardians house and passes by the front of the chateau before arriving to the rear. Steps at the front lead into the magnificent entrance hall (35m²) which runs from the front to the back and has a black and white tiled floor and beautifully picked out cornicing to the ceiling. Off to the left are 2 large reception rooms (both 43m²) used as a living room and a library/drawing room with parquet flooring throughout and there is also a study/office (14m²) off the living room with a feature stained glass window. To the right of the entrance hall there is a large dining room (43m²) with wooden floor and also a corridor which leads to the large kitchen (21m²) with feature fireplace and this leads into the conservatory (50m²) which overlooks the heated pool (15m x 6m) and lake (approx. 5,500m²). The towers both have staircases, one of which has a stunning...

LOCAL TAXES

Taxe foncière: 4000 EUR

NOTES