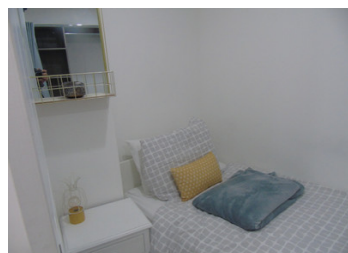
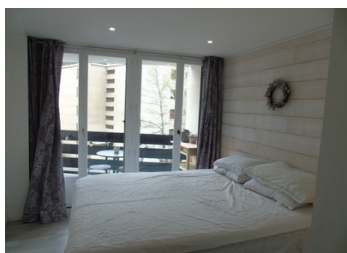


Spacious ski apartment for sale in Serre Chevalier.



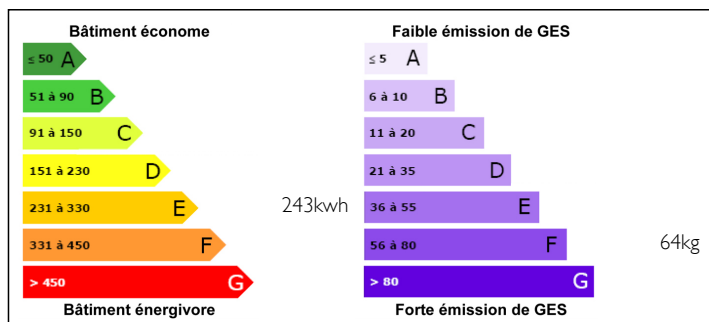
INFORMATION

Town:	Saint-Chaffrey
Department:	Hautes-Alpes
Bed:	2
Bath:	1
Floor:	49 m2
Outside Space:	4 m2

IN BRIEF

Completely renovated apartment in Chantemerle...
Sleeps 5 comfortably.

ENERGY - DPE



NB. Quoted prices relate to euro transactions. Fluctuations in exchange rates are not the responsibility of the agency or those representing it. The agency and its representatives are not authorised to make or give guarantees relating to the property. These particulars do not form part of any contract but are to be taken as a general representation of the property. Any areas, measurements or distances are approximate. Text, photographs and plans, where applicable, are for guidance only. Leggett and its representatives have not tested services, equipment or facilities and cannot guarantee the same.

Particulars for off-plan purchases are intended as a guide only. Final finishes to the property may vary. Purchasers are advised to engage a solicitor to check the plans and specifications as laid out in their purchase contract with the developer.



DESCRIPTION

The Apartment.....

This bright and spacious apartment has just been completely renovated and reconfigured to provide comfortable sleeping for 5. It is on the 3rd floor and comes with a cave and ski locker.

On entering the apartment we have a very practical cupboard where the washing machine is installed. Opposite is the newly fitted wall mounted toilet. Along the corridor we have a single bedroom (coin montagne) on the left and a cleverly arranged bunk bed concealed behind sliding doors.

The master bedroom has double doors that open on to the balcony with views of the ski pistes in Chantemerle. The bathroom is brand new with bath and shower.

The main living area contains the dining area, lounge and fully fitted modern kitchen.

This lovely property is well located, well configured as well as being bright and spacious. This is a rare opportunity to own a property big enough for a large family at under 300 k.

The Area....

Situated at the northern most part of Les Hautes Alpes, Briançon and Serre Chevalier are hidden pearls of the alpes offering history and culture as well as unspoilt mountain paradise.

Chantemerle is one of the main villages that make up the Serre Chevalier Valley. At 1350 m altitude it has a very alpine feel to it and yet still offers all the services and amenities required of a modern ski...

NOTES