

Chantemerle, Serre Chevalier - Spacious 2 bedroom apartment for sale. WITHOUT LEASEBACK CONTRACT

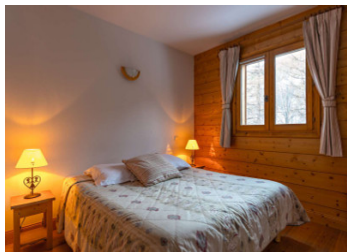


INFORMATION

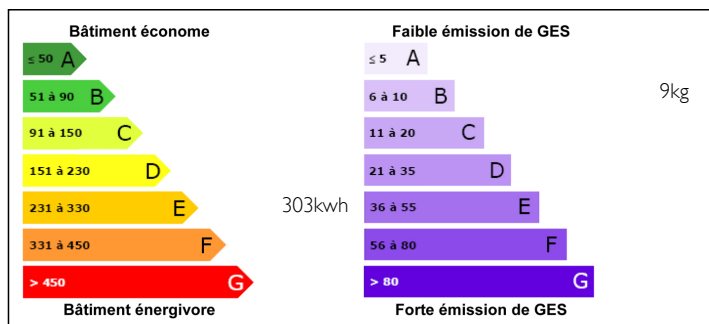
Town:	Saint-Chaffrey
Department:	Hautes-Alpes
Bed:	2
Bath:	1
Floor:	57 m2
Outside Space:	12 m2

IN BRIEF

Quality ski apartment for sale in well maintained residence. Very close to pistes and lifts.

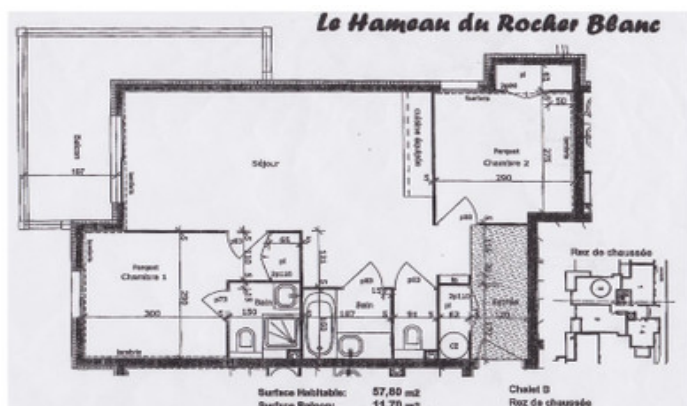


ENERGY - DPE



NB. Quoted prices relate to euro transactions. Fluctuations in exchange rates are not the responsibility of the agency or those representing it. The agency and its representatives are not authorised to make or give guarantees relating to the property. These particulars do not form part of any contract but are to be taken as a general representation of the property. Any areas, measurements or distances are approximate. Text, photographs and plans, where applicable, are for guidance only. Leggett and its representatives have not tested services, equipment or facilities and cannot guarantee the same.

Particulars for off-plan purchases are intended as a guide only. Final finishes to the property may vary. Purchasers are advised to engage a solicitor to check the plans and specifications as laid out in their purchase contract with the developer.



NOTES

DESCRIPTION

The Apartment....

The Hammeau du Rocher Blanc is a modern complex that is just 13 years old. It is located just 200 m from the heart of Chantemerle and is a very popular residence that is well maintained and managed.

Here we have a fantastic 2 bedroom property of 56 m². There's a double room with en suite and another twin room. The main living area has dining, lounge and kitchen in one spacious open plan room. There is a separate bathroom and w.c. and a 12 m² balcony overlooking the river.

The reception area and lounge is warm and comfortable and the reception staff are renowned for their helpful approach to owners and guests alike.

This property comes with underground parking space and ski locker, as well as a "cave" where the owners can leave their personal gear all year round.

The Area....

Chantemerle is one of the central villages in the Serre Chevalier Ski Domain. Although it is not like a large ski resort, it has all of the amenities one requires in a well equipped ski station. There is a wide choice of bars and restaurants and the 2 main ski lifts rarely have queues.

Behind the residence is the recently landscaped "Parc Collombiere". This has a bio lake for swimming, a creche, restaurant and tennis club. There is transport up and down the valley all year...