

## Well located mountain retreat for sale in Puy Saint Vincent 1800



## INFORMATION

Town:	Puy-Saint-Vincent
Department:	Hautes-Alpes
Bed:	2
Bath:	1
Floor:	44 m2
Plot Size:	10 m2

## IN BRIEF

Ski in / out property in altitude complex with heated outdoor swimming pool.

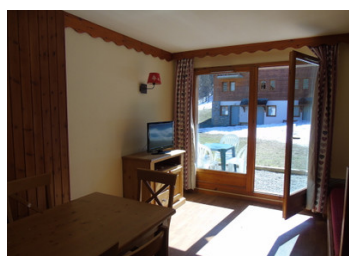


## ENERGY - DPE



NB. Quoted prices relate to euro transactions. Fluctuations in exchange rates are not the responsibility of the agency or those representing it. The agency and its representatives are not authorised to make or give guarantees relating to the property. These particulars do not form part of any contract but are to be taken as a general representation of the property. Any areas, measurements or distances are approximate. Text, photographs and plans, where applicable, are for guidance only. Leggett and its representatives have not tested services, equipment or facilities and cannot guarantee the same.

Particulars for off-plan purchases are intended as a guide only. Final finishes to the property may vary. Purchasers are advised to engage a solicitor to check the plans and specifications as laid out in their purchase contract with the developer.



## LOCAL TAXES

**Taxe foncière: 754 EUR**

## NOTES

## DESCRIPTION

The Property....

Le Parc Aux Etoilles is a well maintained ski residence made up of apartments and terraced chalets.

It is located on the piste that descends to Puy 1600. Here we have a lovely 2 bedroom terraced chalet which can sleep up to 6 comfortably. On the lower floor is a kitchen that opens on to the dining room / lounge which has a bay window looking out on the private terrace.

Upstairs we have a bunk bed room and a double. On this floor is also a bathroom and separate w.c.

The chalet is just 20 m from the heated out door pool for use of residents only. Just inside the residence is a sauna and shower facility.

The property comes with covered parking.

The piste side location of this property make it an ideal rental investment.

The Area...

Puy Saint Vincent 1800 has the highest residences in the ski domain. It is right beside the Clot D'Aval piste and the Parc aux Etoilles is located right beside it.

From this vantage point we can see right down the valley and up towards the Ecrin National Parc. Puy Saint Vincent in recent years has become a popular niche ski resort for families looking for a safe and friendly skiing at a good price.

The slopes cover 1400 m of altitude from 1300 to 2700 m and the resort has excellent snow record.

-----

Information about risks to which this...