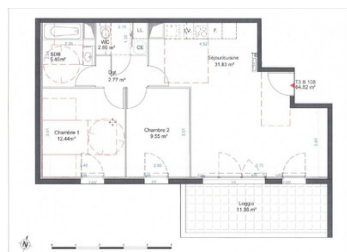


## New residence off-plan and eligible for the Pinel scheme



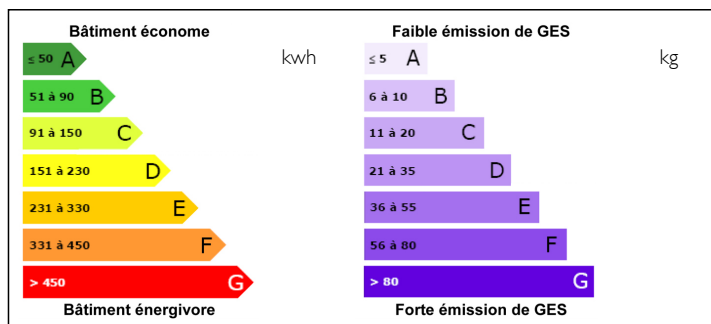
## INFORMATION

Town:	Morières-lès-Avignon
Department:	Vaucluse
Bed:	2
Bath:	1
Floor:	64 m <sup>2</sup>
Plot Size:	0 m <sup>2</sup>

## IN BRIEF

VEFA residence, eligible for the Pinel scheme Morrières les Avignon, in a quiet area, the residence extends over a large area of 5,000 m<sup>2</sup>, decorated with landscaped gardens and green spaces. Its three small buildings display contemporary architecture. The entire residence thus elegantly integrates into the residential environment of the district, while offering you the privacy of an unspoiled address. Each apartment has a terrace or a small private garden, offering pleasant unobstructed views of the shared spaces of the residence.

## ENERGY - DPE



NB. Quoted prices relate to euro transactions. Fluctuations in exchange rates are not the responsibility of the agency or those representing it. The agency and its representatives are not authorised to make or give guarantees relating to the property. These particulars do not form part of any contract but are to be taken as a general representation of the property. Any areas, measurements or distances are approximate. Text, photographs and plans, where applicable, are for guidance only. Leggett and its representatives have not tested services, equipment or facilities and cannot guarantee the same.

Particulars for off-plan purchases are intended as a guide only. Final finishes to the property may vary. Purchasers are advised to engage a solicitor to check the plans and specifications as laid out in their purchase contract with the developer.

## DESCRIPTION

Living room / kitchen 31.8m<sup>2</sup>

bedroom 1 2.4m<sup>2</sup>

bedroom 2 9.55m<sup>2</sup>

loggia 10.27m<sup>2</sup>

indoor parking

-----

Information about risks to which this property is exposed is available on the Géorisques website : <https://www.georisques.gouv.fr>

## NOTES