

Townhouse with one bedroom flat and large courtyard in Richelieu. 360 DEGREE VIRTUAL TOUR AVAILABLE

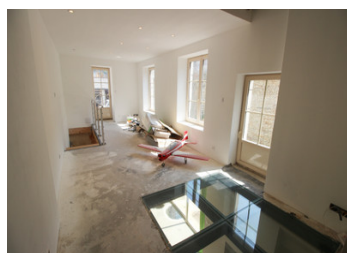


INFORMATION

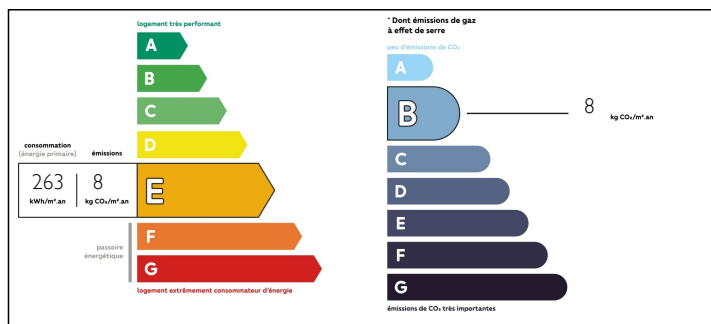
Town:	Richelieu
Department:	Indre-et-Loire
Bed:	3
Bath:	2
Floor:	142 m2
Plot Size:	859 m2

IN BRIEF

In the centre of the historic town of Richelieu is this house with rooms to decorate and finish. It benefits from a one bedroom studio and an open hangar and, with a little landscaping, there is plenty of space outside in the courtyard to create a lovely garden.



ENERGY - DPE



NB. Quoted prices relate to euro transactions. Fluctuations in exchange rates are not the responsibility of the agency or those representing it. The agency and its representatives are not authorised to make or give guarantees relating to the property. These particulars do not form part of any contract but are to be taken as a general representation of the property. Any areas, measurements or distances are approximate. Text, photographs and plans, where applicable, are for guidance only. Leggett and its representatives have not tested services, equipment or facilities and cannot guarantee the same.

Particulars for off-plan purchases are intended as a guide only. Final finishes to the property may vary. Purchasers are advised to engage a solicitor to check the plans and specifications as laid out in their purchase contract with the developer.



DESCRIPTION

You access the property through the entry porch (16m²). The house is to the left and you enter directly into the fitted kitchen (23m²). Continuing through, the living room (19m²) has double doors out to the courtyard. At the end of the room a door takes you through to a room (10m²) which the vendor has started to renovate to create a downstairs bedroom with ensuite shower room. A modern staircase leads from the living room to an upstairs sitting room to finish (21.5m²) with feature glass floor. This room has a door out to a terrace which has a staircase down into the courtyard. Off a corridor and landing (9m²), is a WC (2m²) a bedroom (22m²), a second bedroom (13m²) to finish and shower room (9m²) with shower and twin basins to finish painting. A staircase leads to the attic space which the vendor has begun renovating. There is a second attic for storage. Back out in the entry porch, to the right is a room to renovate (16m²) which would make a great office space.

Outside, in the large courtyard, there is a separate outbuilding with two rooms to renovate on the ground floor (8m² and 21m²) and a one bedroom flat with living room (16.5m²) with WC (1m²) and bedroom (10m²) with shower and hand basin. There is also a hangar in three parts (28m², 26m² & 28m² = 82m² total)

With a little landscaping, there's plenty of space...

NOTES