

Under Offer ! Beautiful hamlet house, completely renovated, 3 bedrooms, in a beautiful environment.

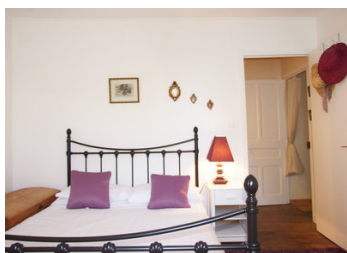


INFORMATION

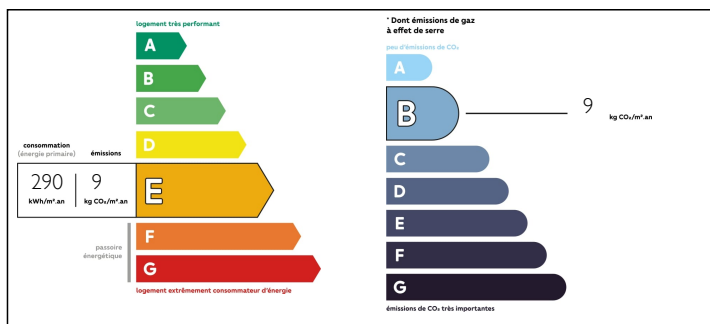
Town:	Cussac
Department:	Haute-Vienne
Bed:	3
Bath:	1
Floor:	80 m2
Plot Size:	290 m2

IN BRIEF

Country home, ready to move into, for permanent or holiday living, in a quiet and friendly hamlet. A beautiful castle. From the house, a stone path goes through a large forest with lakes. Very calm environment and ideal for nature lovers. At the limit of the Dordogne and Charente.



ENERGY - DPE



NB. Quoted prices relate to euro transactions. Fluctuations in exchange rates are not the responsibility of the agency or those representing it. The agency and its representatives are not authorised to make or give guarantees relating to the property. These particulars do not form part of any contract but are to be taken as a general representation of the property. Any areas, measurements or distances are approximate. Text, photographs and plans, where applicable, are for guidance only. Leggett and its representatives have not tested services, equipment or facilities and cannot guarantee the same.

Particulars for off-plan purchases are intended as a guide only. Final finishes to the property may vary. Purchasers are advised to engage a solicitor to check the plans and specifications as laid out in their purchase contract with the developer.



NOTES

DESCRIPTION

Front yard with stone walls, easy access, center of the hamlet with a cute stone well.

Entirely well restored house, open kitchen, beautiful old flooring, stone fireplace and log burner, very bright living room with French window. Office or bedroom. Laundry with Wc and water point.

Upstairs: corridor giving in 2 bedrooms, a third beautiful bedroom with wardrobe and balcony. Bathroom, WC.

Pretty covered terrace, garden with lovely views. Wooden shed.

All in all a lovely looking house and definitely worth viewing.

Village with all amenities, restaurants, within walking distance.

5 min from a touristic swimming lake. Many historic monument and castles

1 hour from an international airport, and close to large cities with TGV or flights.

Information about risks to which this property is exposed is available on the Géorisques website : <https://www.georisques.gouv.fr>