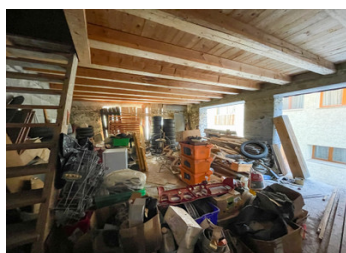
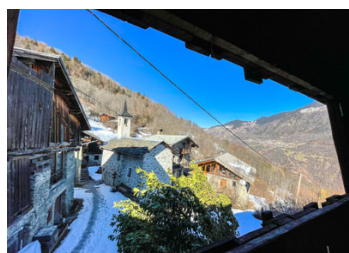


A rare find-Beautiful original barn for renovation already with planning permission, in Courchevel, 3 valleys



INFORMATION

| | |
|-------------|------------|
| Town: | Courchevel |
| Department: | Savoie |
| Bed: | 0 |
| Bath: | 0 |
| Floor: | 0 m2 |
| Plot Size: | 0 m2 |



IN BRIEF

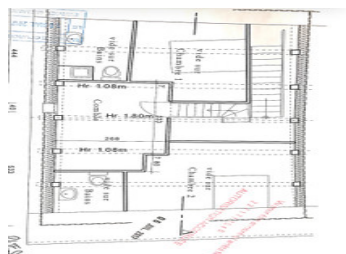
A traditional village Barn of around 132 m2, arranged over 3 floors with planning permission granted for an 88m2 dwelling over 2 floors, retaining an independent ground floor storage area and a garden. The permit includes 2 ensuite bedrooms and a 44m2 open plan living space, and keeping the ground floor as an independent storage area. The barn is set in a beautiful, historic hamlet just 7 minutes drive from the ski lifts of Le Praz, Courchevel. Winter gives easy access to the 3 valleys ski area and summer is beautiful with local walks and summer activities in resort and many lakes, mountains and charming towns and villages to visit.

ENERGY - DPE



NB. Quoted prices relate to euro transactions. Fluctuations in exchange rates are not the responsibility of the agency or those representing it. The agency and its representatives are not authorised to make or give guarantees relating to the property. These particulars do not form part of any contract but are to be taken as a general representation of the property. Any areas, measurements or distances are approximate. Text, photographs and plans, where applicable, are for guidance only. Leggett and its representatives have not tested services, equipment or facilities and cannot guarantee the same.

Particulars for off-plan purchases are intended as a guide only. Final finishes to the property may vary. Purchasers are advised to engage a solicitor to check the plans and specifications as laid out in their purchase contract with the developer.



DESCRIPTION

A traditional village Barn of around 132 m², arranged over 3 floors with planning permission granted for an 88m² dwelling over 2 floors, retaining an independent ground floor storage area and a garden.

The permit includes 2 ensuite bedrooms and a 44m² open plan living space, and keeping the ground floor as an independent storage area

The barn is set in a beautiful, historic hamlet just 7 minutes drive from the ski lifts of Le Praz, Courchevel.

Winter gives easy access to the 3 valleys ski area and summer is beautiful with local walks and summer activities in resort and many lakes, mountains and charming towns and villages to visit.

Information about risks to which this property is exposed is available on the Géorisques website : <https://www.georisques.gouv.fr>

NOTES