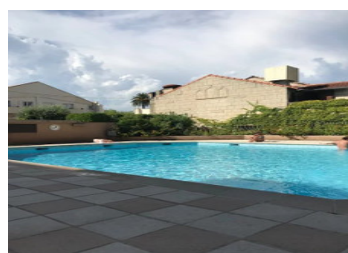
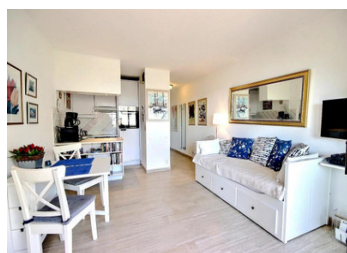


Beautiful studio with sea view and garage in a residence with swimming pool in la Napoule



INFORMATION

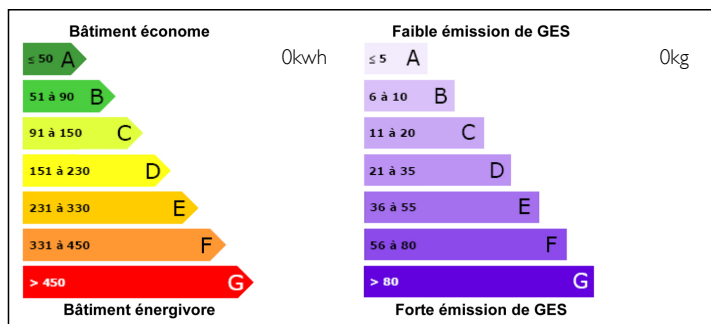
Town:	Mandelieu-la-Napoule
Department:	Alpes-Maritimes
Bed:	0
Bath:	1
Floor:	24 m2
Plot Size:	0 m2



IN BRIEF

Come and discover this stunning little pearl located in the heart of La Napoule, right by the beach. The studio flat is composed by an entry hall with wardrobe, a shower room with toilet, living room with a kitchen and access to a lovely terrace with sea view. There is a beautiful swimming pool in the residence and the apartment is sold with a large cellar and an underground parking place. Perfect as a holiday flat or an investment property buy-to-let. Yearly charges: 1200€

ENERGY - DPE



NB. Quoted prices relate to euro transactions. Fluctuations in exchange rates are not the responsibility of the agency or those representing it. The agency and its representatives are not authorised to make or give guarantees relating to the property. These particulars do not form part of any contract but are to be taken as a general representation of the property. Any areas, measurements or distances are approximate. Text, photographs and plans, where applicable, are for guidance only. Leggett and its representatives have not tested services, equipment or facilities and cannot guarantee the same.

Particulars for off-plan purchases are intended as a guide only. Final finishes to the property may vary. Purchasers are advised to engage a solicitor to check the plans and specifications as laid out in their purchase contract with the developer.

DESCRIPTION

Come and discover this stunning little pearl located in the heart of La Napoule, right by the beach. The studio flat is composed by an entry hall with wardrobe, a shower room with toilet, living room with a kitchen and access to a lovely terrace with sea view. There is a beautiful swimming pool in the residence and the apartment is sold with a large cellar and an underground parking place. Perfect as a holiday flat or an investment property buy-to-let. Yearly charges: 1200€

Information about risks to which this property is exposed is available on the Géorisques website : <https://www.georisques.gouv.fr>

NOTES