

Eze - House with 2 bedrooms overlooking the village of Eze and the Mediterranean

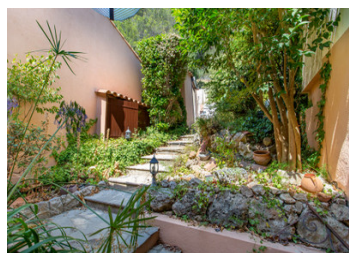
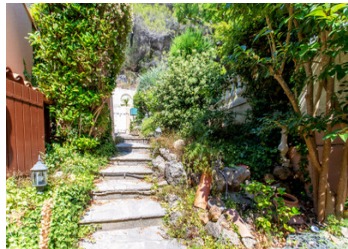
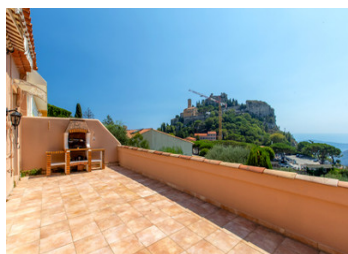
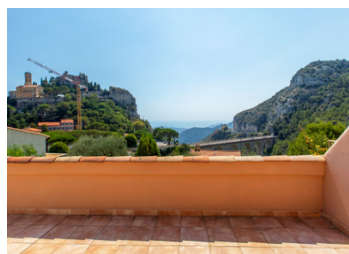


INFORMATION

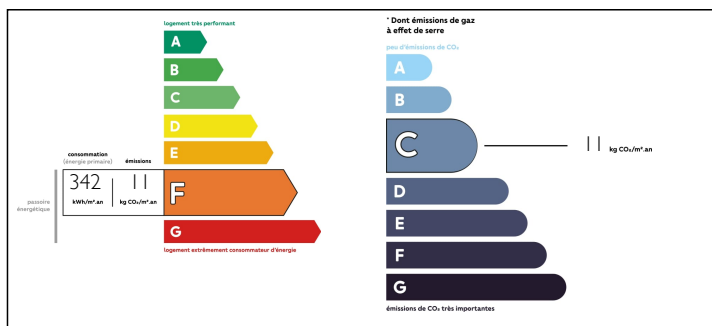
Town:	Èze
Department:	Alpes-Maritimes
Bed:	2
Bath:	2
Floor:	121 m2
Plot Size:	100 m2

IN BRIEF

Eze - A few minutes walk to the village of Eze, facing South, a charming 2 bedroom house set on 2 levels. Beautiful views of the Village and the Mediterranean sea. The upper level has the entrance hall, living room, kitchen, both opening unto the large terrace of 25 m², below we have 2 bedrooms both with veranda overlooking the garden, bathroom, shower room, 2 toilets, large dressing, laundry room. Garage. Monthly fees of 110€.



ENERGY - DPE



NB. Quoted prices relate to euro transactions. Fluctuations in exchange rates are not the responsibility of the agency or those representing it. The agency and its representatives are not authorised to make or give guarantees relating to the property. These particulars do not form part of any contract but are to be taken as a general representation of the property. Any areas, measurements or distances are approximate. Text, photographs and plans, where applicable, are for guidance only. Leggett and its representatives have not tested services, equipment or facilities and cannot guarantee the same.

Particulars for off-plan purchases are intended as a guide only. Final finishes to the property may vary. Purchasers are advised to engage a solicitor to check the plans and specifications as laid out in their purchase contract with the developer.



DESCRIPTION

Eze - A few minutes walk to the village of Eze, facing South, a charming 2 bedroom house set on 2 levels. Beautiful views of the Village and the Mediterranean sea. The upper level has the entrance hall, living room, kitchen, both opening unto the large terrace of 25 m², below we have 2 bedrooms both with veranda overlooking the garden, bathroom, shower room, 2 toilets, large dressing, laundry room.

Garage.

Monthly fees of 110€.

Information about risks to which this property is exposed is available on the Géorisques website : <https://www.georisques.gouv.fr>

LOCAL TAXES

Taxe foncière: 1630 EUR

NOTES