

3 bedroom ski apartment for sale in Montalbert la Plagne. Private interior parking space plus cave/ski locker.

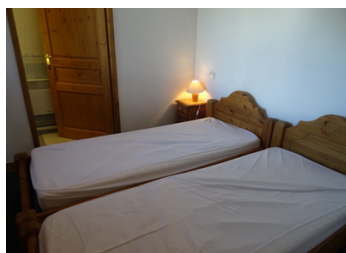


## INFORMATION

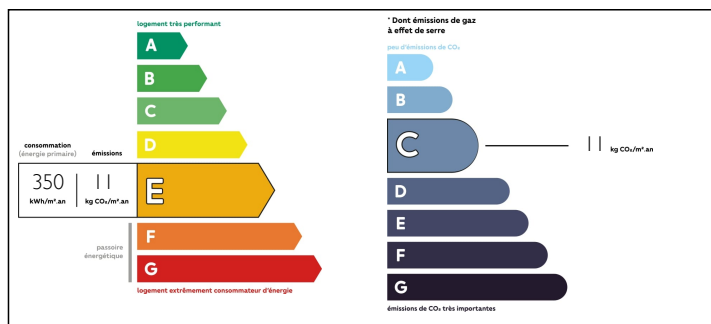
Town:	Aime-la-Plagne
Department:	Savoie
Bed:	3
Bath:	2
Floor:	57.8 m2
Outside Space:	14 m2

## IN BRIEF

What a great family home in the mountains in the pretty village of Montalbert, la Plagne, Paradiski. Located in a popular, small scale residence an easy level walk from the village centre and the telecabine, the apartment offers 3 bedrooms, a spacious living area with access to a big balcony (14m2) and an internal private parking space –so no parking worries. Montalbert (1350m) is connected to high altitude la Plagne by telecabine which whisks you up to Le Fomelet (1970m) in only 6 minutes. See you on the great terrace at the 360 restaurant at the top of the telecabine.

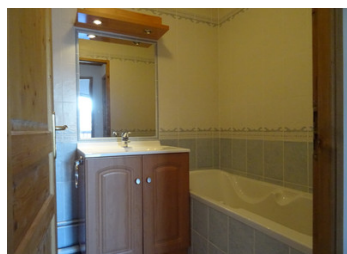


## ENERGY - DPE



NB. Quoted prices relate to euro transactions. Fluctuations in exchange rates are not the responsibility of the agency or those representing it. The agency and its representatives are not authorised to make or give guarantees relating to the property. These particulars do not form part of any contract but are to be taken as a general representation of the property. Any areas, measurements or distances are approximate. Text, photographs and plans, where applicable, are for guidance only. Leggett and its representatives have not tested services, equipment or facilities and cannot guarantee the same.

Particulars for off-plan purchases are intended as a guide only. Final finishes to the property may vary. Purchasers are advised to engage a solicitor to check the plans and specifications as laid out in their purchase contract with the developer.



## DESCRIPTION

Situated on the 3rd floor of the residence with access by lift, the accommodation comprises:

Entrance hallway with built in storage.

Bedroom 1; a double room with en suite shower room

Spacious living/dining area with open plan kitchen and access to the north and west facing L shaped balcony ( just over 14m2).

Separate WC.

Bathroom with bath, shower attachment and WC.

Bedroom 2; a twin/double room with built in storage.

Bedroom 3; a good sized bunk room with built in storage.

Locale; cave/cellar plus ski locker.

Private parking space in the residence's garage.

Montalbert is a family friendly village with a good choice of shops, bars and restaurants. The telecabine has transformed access to the higher slopes of la Plagne and there are some lovely runs through the trees back to the village.

There is a busy summer season in July and August with walking, mountain biking, e biking, parapenting and white water rafting just some of the activities on offer—or have a glass of vino on the balcony.

-----

Information about risks to which this property is exposed is available on the Géorisques website : <https://www.georisques.gouv.fr>

## NOTES