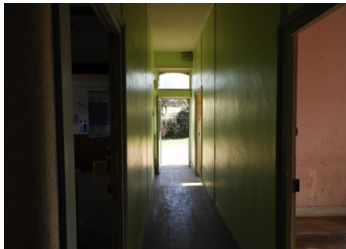


Former post office for renovation in little village: business + housing possibilities all in the same building



INFORMATION

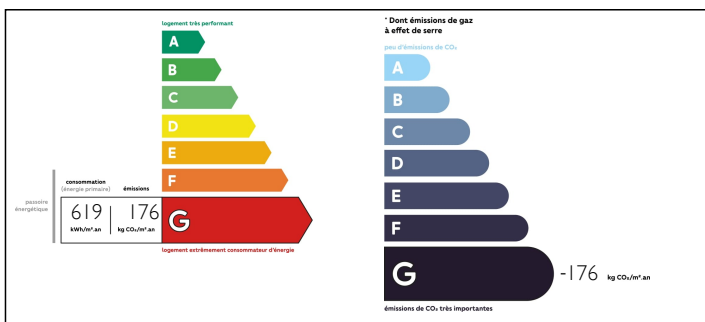
Town:	Eyburie
Department:	Corrèze
Bed:	3
Bath:	1
Floor:	84.5 m2
Plot Size:	1233 m2



IN BRIEF

Entrance, hallway with on the left: kitchen, living room. On the right two rooms with their own entrance (former Post office) At the end of the hallway the entrance to the cellar and the staircase to the first floor: three bedrooms, bathroom, separate toilet and attic. Garden with barn/garage, outside toilets.

ENERGY - DPE



NB. Quoted prices relate to euro transactions. Fluctuations in exchange rates are not the responsibility of the agency or those representing it. The agency and its representatives are not authorised to make or give guarantees relating to the property. These particulars do not form part of any contract but are to be taken as a general representation of the property. Any areas, measurements or distances are approximate. Text, photographs and plans, where applicable, are for guidance only. Leggett and its representatives have not tested services, equipment or facilities and cannot guarantee the same.

Particulars for off-plan purchases are intended as a guide only. Final finishes to the property may vary. Purchasers are advised to engage a solicitor to check the plans and specifications as laid out in their purchase contract with the developer.



DESCRIPTION

A b building with plenty possibilities: It can either be a large(r) house or keep the house as it is and create a shop, workspace or other business where the Post office used to be. This part of the building has got its own entrance, the living area has got its private entrance too. All is in need of renovations although the back of the property has got double glazing as well as the two entrance doors.

The garden is pretty large and gently slopes. You will be in a calm area, close to the lovely Correzean countryside.

Uzerche is the closest town which offers most amenities: a train station (to Paris in about 4 hours), a medical center, a cinema, a summer pool, three supermarkets, a vet, galleries, bars and restaurants, hair dressers etc.

Limoges is at 60 minutes, Limoges airport offers regular flights to the UK: London Stansted&Gatwick, Southampton, Bradford/Leeds,, Nottingham, Bristol and Manchester.

Information about risks to which this property is exposed is available on the Géorisques website : <https://www.georisques.gouv.fr>

NOTES