

Two bedroom apartment situated in a new and modern complex for sale in the centre of Bonneville

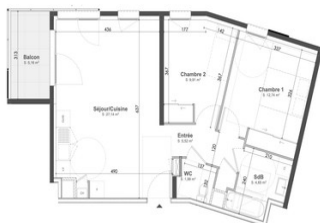


INFORMATION

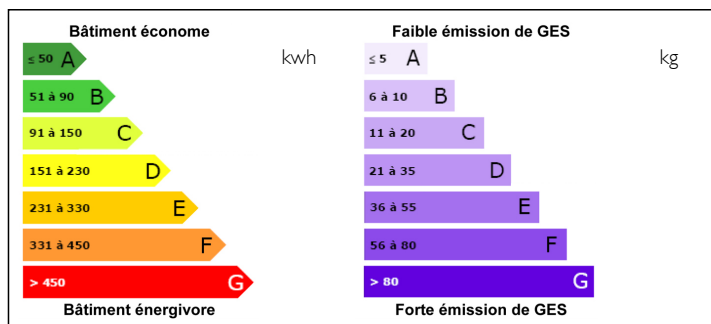
Town:	Bonneville
Department:	Haute-Savoie
Bed:	2
Bath:	1
Floor:	61.95 m2
Outside Space:	5 m2

IN BRIEF

Ideally located two bedroom apartment of 61,95m2 situated on the 3rd floor. Kitchen/lounge - 27,14m2 Bedroom 1 - 9,91m2 Bedroom 2- 12,74m2 Bathroom - 4,65m2 Balcony - 5,16m2 Garage Delivery Q3 2023 Several apartments 1 to 3 bedrooms available from 245 000€



ENERGY - DPE



NB. Quoted prices relate to euro transactions. Fluctuations in exchange rates are not the responsibility of the agency or those representing it. The agency and its representatives are not authorised to make or give guarantees relating to the property. These particulars do not form part of any contract but are to be taken as a general representation of the property. Any areas, measurements or distances are approximate. Text, photographs and plans, where applicable, are for guidance only. Leggett and its representatives have not tested services, equipment or facilities and cannot guarantee the same.

Particulars for off-plan purchases are intended as a guide only. Final finishes to the property may vary. Purchasers are advised to engage a solicitor to check the plans and specifications as laid out in their purchase contract with the developer.

DESCRIPTION

Modern and secure new-build residence, nestled in the Arve valley located between Geneva and Chamonix.

Bonneville is a vibrant and rural town with schools and local services, access to central Geneva via the Léman express train network.

You can choose the final design of your apartment with a vast array of tile and wooden floor choices.

Each apartment has a terrace or balcony, the top floor apartments come with a roof terrace. Each apartment also has its own garage and storage area.

The building is secure with videophone and each apartment has its own gas boiler providing heating and hot water.

The residence will be completed in the 3rd quarter of 2023.

Access

Geneva is 45km (35mn) 35km from Annemasse (30mn), à 190km from Lyon (2h), 60km from Annecy (45mn)

Less than 30 mins drive to some great skiing: Les Gêts, Carroz d'Arches, Morillon...

Bonneville train station allows access to the Léman Express local train network, and the French national TGV network.

Information about risks to which this property is exposed is available on the Géorisques website : <https://www.georisques.gouv.fr>

NOTES