

Perche-Gouët At the end of a lane rural location, farmhouse and outbuildings set in 6000m grounds...

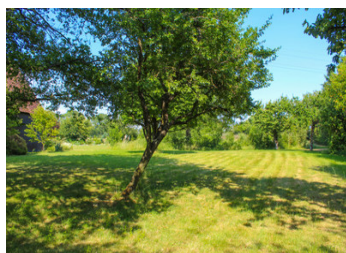


INFORMATION

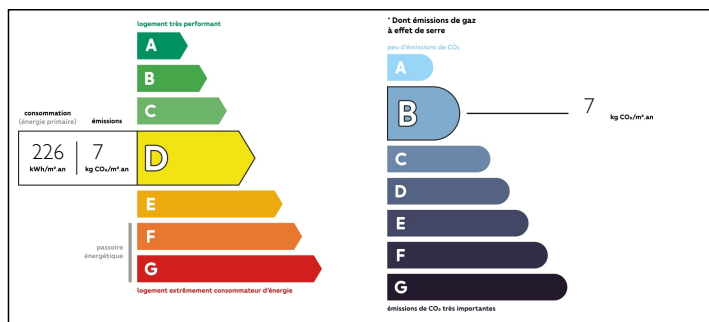
Town:	Unverre
Department:	Eure-et-Loir
Bed:	5
Bath:	4
Floor:	220 m2
Plot Size:	6000 m2

IN BRIEF

Maison Perche. Just 1 1/2 hrs from Paris . Rural retreat. Located at the end of the lane with no neighbors in peaceful countryside in the Perche Gouët . Recently renovated authentic farmhouse dating from 1791. With 5 bedrooms and 4 bathrooms, many original features and plenty of charm. Outbuildings and 1 1/2 acres with large pond.

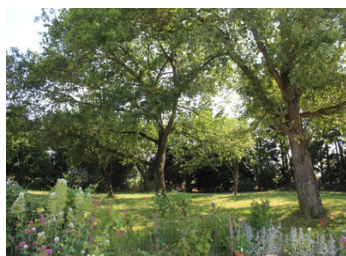


ENERGY - DPE



NB. Quoted prices relate to euro transactions. Fluctuations in exchange rates are not the responsibility of the agency or those representing it. The agency and its representatives are not authorised to make or give guarantees relating to the property. These particulars do not form part of any contract but are to be taken as a general representation of the property. Any areas, measurements or distances are approximate. Text, photographs and plans, where applicable, are for guidance only. Leggett and its representatives have not tested services, equipment or facilities and cannot guarantee the same.

Particulars for off-plan purchases are intended as a guide only. Final finishes to the property may vary. Purchasers are advised to engage a solicitor to check the plans and specifications as laid out in their purchase contract with the developer.



DESCRIPTION

Superb location in peaceful spot at the end of a lane, no neighbors, views over the countryside. 1791 farmhouse with its original barns all set around the courtyard. Recently renovated including new roofs on all the buildings. The farmhouse has a spacious kitchen opening onto the conservatory overlooking the garden, large utility room with a shower and wc. Living room with a superb fireplace and a Polyflam heating system, exposed timber framed wall separating from the dining room, wine cellar. Upstairs is a good sized landing leading to the very large master suite - master bedroom, dressing room bathroom with shower and wc, lounge or office - four further bedrooms, one with a shower room and wc, and a family bathroom. Adjoining is a 30m² storage space and a large garage/workshop. Two beautiful original timber part open barns both recently renovated and providing parking, storage. All set in a plot of 6100m² with mature trees, lawns, orchard, large pond, a well and exceptionally richly planted landscaped gardens. Peaceful and a beautiful setting for this authentic property. Lovely views.

Information about risks to which this property is exposed is available on the Géorisques website : <https://www.georisques.gouv.fr>

NOTES