

Wonderful idyllic riverside property with land alongside the river in a romantic french village

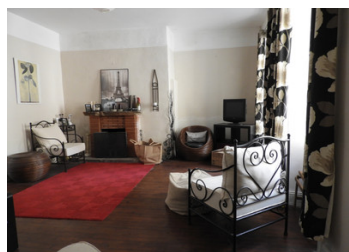


INFORMATION

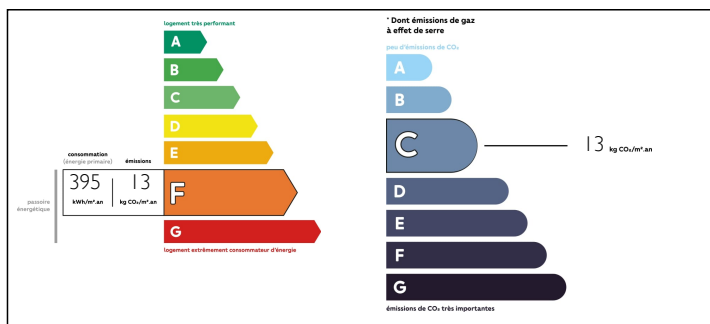
Town:	Ségur-le-Château
Department:	Corrèze
Bed:	2
Bath:	1
Floor:	82 m2
Plot Size:	1888 m2

IN BRIEF

Lovely riverside house, comprising a sitting room, kitchen, 2 bedrooms, shower room with toilet and one separate toilets, attic and cellar. Adjacent garage and stone shed with terrace on top. Garden-parc alongside the river.



ENERGY - DPE



NB. Quoted prices relate to euro transactions. Fluctuations in exchange rates are not the responsibility of the agency or those representing it. The agency and its representatives are not authorised to make or give guarantees relating to the property. These particulars do not form part of any contract but are to be taken as a general representation of the property. Any areas, measurements or distances are approximate. Text, photographs and plans, where applicable, are for guidance only. Leggett and its representatives have not tested services, equipment or facilities and cannot guarantee the same.

Particulars for off-plan purchases are intended as a guide only. Final finishes to the property may vary. Purchasers are advised to engage a solicitor to check the plans and specifications as laid out in their purchase contract with the developer.



DESCRIPTION

In one of the most authentic villages of the Corrèze and on the doorstep of the Dordogne, you will find this lovely riverside-house.

It comprises a light sitting room with fire place to the right of the front door and a bedroom behind it, with a view on the river and park-garden.

The other bedroom is left of the front door.

Opposite the entrance you will find the stairs to go to the attic and a corridor to go to the kitchen, which is facing the river and the garden.

The ceiling is made from large beams which have the shape of the trees they were made of. That is why the attic floor is not levelled. But if a floor would be put on top of the beams, the attic can become a lovely area with enough room for two more bedrooms and a bathroom.

The stone shed has a wonderful terrace on top.

You will be in a calm area yet close to villages with most amenities.

Ségur-le-Château is classed as one of the prettiest villages and offers a medieval atmosphere. The village square at the riverside with the half-timbered houses around it is simply wonderful. There are a bars and restaurants to enjoy the scenery at the fullest.

Nearest villages with supermarkets, bars/restaurants, GP's, vets etc are Lubersac (7 minutes by car) and Arnac-Pompadour (15 minutes by car)

Limoges airport with regular flights to the UK (and the rest of Europe from where you can get to worldwide cities) is...

LOCAL TAXES

Taxe foncière: 422 EUR

NOTES