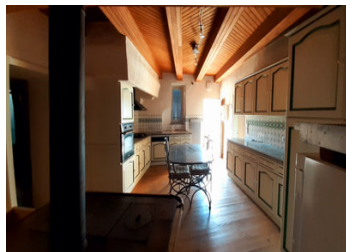


Troglodyte house with splendid views



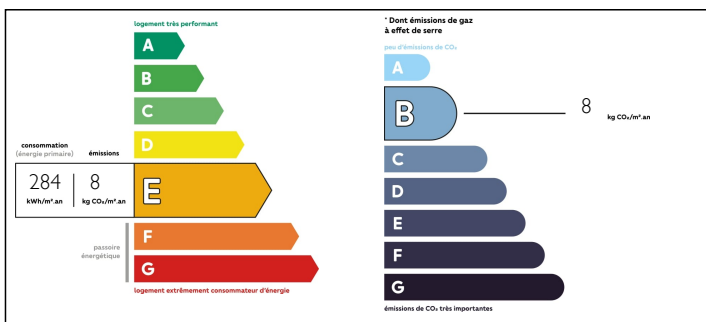
INFORMATION

Town:	Cabrerets
Department:	Lot
Bed:	2
Bath:	2
Floor:	80 m ²
Plot Size:	635 m ²

IN BRIEF

Unusual renovated house of 80 m² on a plot of 635 m² and more than 1 ha of land on the cause. Lovely garden and large terrace with a magnificent panorama on the village and the valley. South facing, the house includes a pleasant living room of 18 m² with fireplace, 2 beautiful bedrooms of 18 and 12 m², each with its own bathroom, and a spacious kitchen of 20 m² with a wood stove, with a wood cooker. Double glazing. Cellars. Spring with water supply. Bread oven on the terrace. Mains drainage. Charming village with all the necessary shops. The location, very popular with tourists, near St-Cirq-Lapopie, makes this unusual house ideal for use as a gîte or to enjoy it occasionally as a second home. A rare property due to its singularity and location, which should be discovered quickly.

ENERGY - DPE



NB. Quoted prices relate to euro transactions. Fluctuations in exchange rates are not the responsibility of the agency or those representing it. The agency and its representatives are not authorised to make or give guarantees relating to the property. These particulars do not form part of any contract but are to be taken as a general representation of the property. Any areas, measurements or distances are approximate. Text, photographs and plans, where applicable, are for guidance only. Leggett and its representatives have not tested services, equipment or facilities and cannot guarantee the same.

Particulars for off-plan purchases are intended as a guide only. Final finishes to the property may vary. Purchasers are advised to engage a solicitor to check the plans and specifications as laid out in their purchase contract with the developer.



DESCRIPTION

Information about risks to which this property is exposed is available on the Géorisques website : <https://www.georisques.gouv.fr>

LOCAL TAXES

Taxe foncière: 576 EUR

NOTES