

Detached 1-bedroom house with detached 1 bedroom studio, barn and enclosed garden with views

EXCLUSIVE



INFORMATION

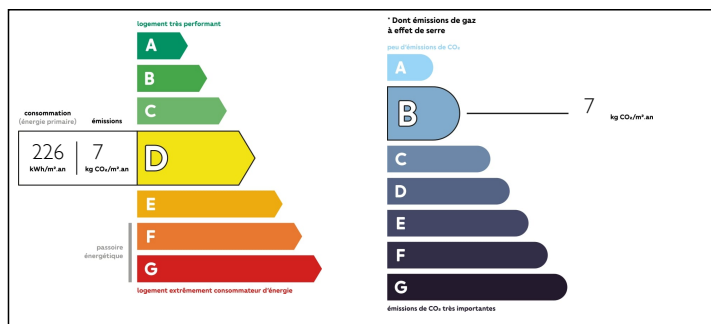
Town:	Courlac
Department:	Charente
Bed:	2
Bath:	2
Floor:	56 m2
Plot Size:	2701 m2

IN BRIEF

A group of three natural stone buildings, which include a spacious and light one-bedroom house, an independent 1 bedroom studio cottage & a barn set with-in an enclosed garden with views across the beautiful French countryside. It is possible for this property to be sold furnished.

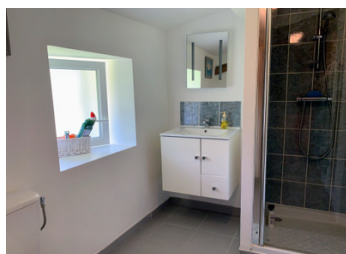


ENERGY - DPE



NB. Quoted prices relate to euro transactions. Fluctuations in exchange rates are not the responsibility of the agency or those representing it. The agency and its representatives are not authorised to make or give guarantees relating to the property. These particulars do not form part of any contract but are to be taken as a general representation of the property. Any areas, measurements or distances are approximate. Text, photographs and plans, where applicable, are for guidance only. Leggett and its representatives have not tested services, equipment or facilities and cannot guarantee the same.

Particulars for off-plan purchases are intended as a guide only. Final finishes to the property may vary. Purchasers are advised to engage a solicitor to check the plans and specifications as laid out in their purchase contract with the developer.



NOTES

DESCRIPTION

The property consists of the following:

House

Sitting room (17m²) with a beamed ceiling, terracotta floor and door to garden.

Kitchen (17.8m²) Attractive stone chimney with wood burning stove, door leading to garden. Fitted kitchen units, original tiled floor.

BEDROOM (17.7m²) Spacious room with door leading to sun terrace. Chimney with insert wood burner.

HALL

SHOWER ROOM with hand basin, shower and heated towel rail

W.C.

Enclosed garden with gated entrance and stunning views across rolling countryside. A selection of mature fruit trees, above ground pool and sun terrace.

STUDIO COTTAGE

Recently converted offering

ENTRANCE HALL (5m²)

SHOWER ROOM (4m²) with shower, W.C. hand basin, heated towel rail

BEDROOM (19.1m²) with natural stone wall, a light spacious room with original features, high ceiling, feature fireplace.

DRESSING ROOM/ OFFICE (8m²) Could also be used as an occasional bedroom.

COVERED TERRACE (35m²) with stunning views, ideal for alfresco dining and enjoying the tranquillity. This terrace could easily be enclosed and converted into an open-plan KITCHEN / LIVING ROOM with stunning views!!!

BARN (100m²)

New roof, ideal for workshop, storage, parking and could be converted into another individual property if required.

This property benefits from:

UK: 08700 11 51 51 France: 0033 (0)553 608 488 FAX: 0033 (0)553 566 257 *All prices include agency fees.

Leggett Immobilier 42 Route de Ribérac 24340 La Rochebeaucourt France Tel: 08 00 73 57 45 Email: info@leggett.fr