

Four bedroom stone house to finish renovating, large garden and swimming pool.



INFORMATION

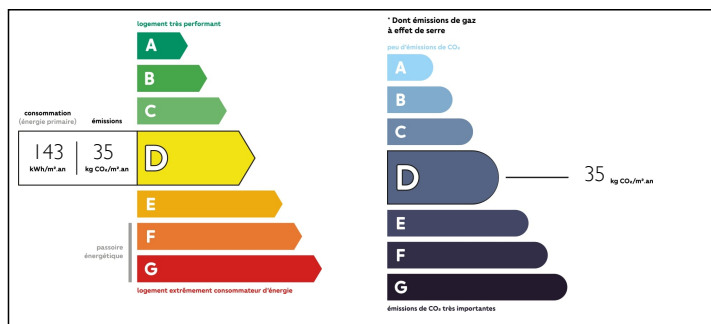
Town:	La Souterraine
Department:	Creuse
Bed:	4
Bath:	2
Floor:	212 m2
Plot Size:	2654 m2

IN BRIEF

Sitting on a very quiet road in a rural farming hamlet, this house has lots of potential to be a large modern family home or holiday idyll. Very close to the beautiful market town of La Souterraine, with lots of amenities including boutiques, café bars, supermarkets and DIY stores. The station has direct trains to Paris, 2.45 minutes and Limoges, 30 minutes.

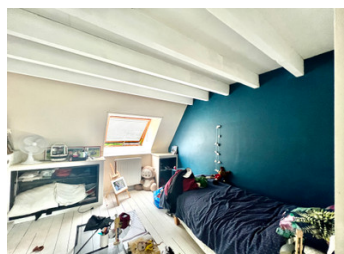


ENERGY - DPE



NB. Quoted prices relate to euro transactions. Fluctuations in exchange rates are not the responsibility of the agency or those representing it. The agency and its representatives are not authorised to make or give guarantees relating to the property. These particulars do not form part of any contract but are to be taken as a general representation of the property. Any areas, measurements or distances are approximate. Text, photographs and plans, where applicable, are for guidance only. Leggett and its representatives have not tested services, equipment or facilities and cannot guarantee the same.

Particulars for off-plan purchases are intended as a guide only. Final finishes to the property may vary. Purchasers are advised to engage a solicitor to check the plans and specifications as laid out in their purchase contract with the developer.



LOCAL TAXES

Taxe foncière: 1 600 EUR

NOTES

DESCRIPTION

A very spacious house, needing to be finished, but completely habitable. The garden is all to the rear, with full sun throughout the day, large and full of established trees and foliage, with a well, and an in-ground swimming pool - needing work to be usable - which will be a great plus, for the long hot summers.

Entering directly from the front into an entrance hallway, with a room with built-in cupboards for hanging coats and lots of storage shelves, and could be used as office space.

Through to a kitchen, laundry room, tiled floors, and this leads through to the dining room kitchen. With built-in shelving, and two sets of double doors out to the garden.

Through to a salon, with a third set of double doors. There is also a shower room and WC.

On the first floor is a spacious landing area, and a space ideal for an office, or library room. A large master bedroom with a wall of sliding windows offering views over the garden. Two bedrooms, one with a mezzanine, and a bathroom, ideal for children, and a third bedroom and bathroom. All have storage space and velux windows.

On the second floor is a part renovated second master bedroom, and attic space with storage areas. This part of the property, as with the first floor master bedroom, is in fact, the first and second floors of the attached barn.

Back on the ground floor of the barn is a large...