

Detached 5-bedroomed stone house with barns, garage, garden and cottage to renovate close to Civray.

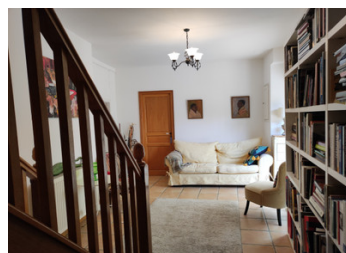


INFORMATION

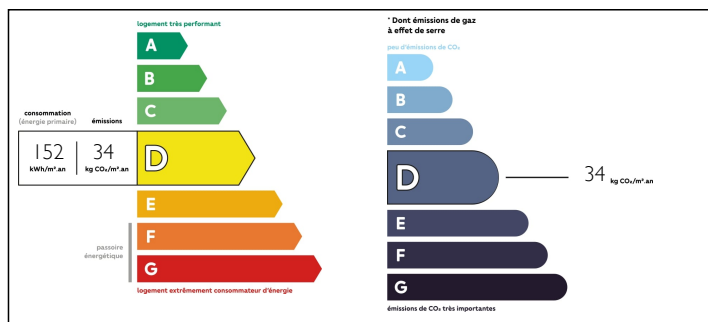
Town:	Voulême
Department:	Vienne
Bed:	5
Bath:	4
Floor:	255 m2
Plot Size:	1543 m2

IN BRIEF

Detached five bedroomed stone house with potential to run as a B&B, outbuildings, garden and a cottage to renovate for further income or family members just next door. This property is ideally situated between Civray and Ruffec with all the commerces you'll need and the village itself has a beautiful park next to the river. Book your viewing today to avoid disappointment.



ENERGY - DPE



NB. Quoted prices relate to euro transactions. Fluctuations in exchange rates are not the responsibility of the agency or those representing it. The agency and its representatives are not authorised to make or give guarantees relating to the property. These particulars do not form part of any contract but are to be taken as a general representation of the property. Any areas, measurements or distances are approximate. Text, photographs and plans, where applicable, are for guidance only. Leggett and its representatives have not tested services, equipment or facilities and cannot guarantee the same.

Particulars for off-plan purchases are intended as a guide only. Final finishes to the property may vary. Purchasers are advised to engage a solicitor to check the plans and specifications as laid out in their purchase contract with the developer.



NOTES

DESCRIPTION

Main house.

Entrance 10m²

Office 6m²

Dining room 15m² with insert wood burning stove

Lounge area 29m²

Utility / laundry room 7m² with connections for the washing machine and a door leading to the covered terrace

Kitchen 18m² recently fitted and equipped with oven, hob and microwave

Lounge 21m² with wood burning stove

Accessed via the stairs to the rear of the property and could be used for B&B guests :

Landing 9m²

Bedroom 16m² with ensuite shower room and WC 4m²

Bedroom 16m² with ensuite shower room and WC 4m²

Landing 6m²

Bedroom 24m² with ensuite shower room and WC 5m²

Accessed by the stairs from the entrance and could be kept for private quarters :

Landing and stairwell 6m²

Shower room with WC 4m²

Bedroom 19m²

2nd floor

Room 14m² leading to a storage room 15m²

Outside :

Garage 30m²

Barn 61m²

Courtyard with covered terrace

House to renovate :

Ground floor

Room 23m²

Room 33m²