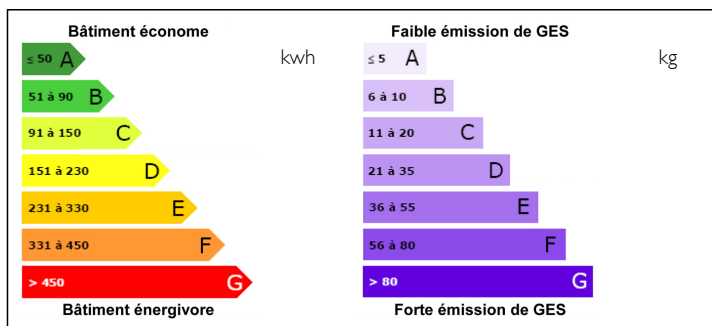


BELLE-ILE-EN-MER Superb NEW T4 Triplex flat DELIVERY 2T 2025 COMMERCIAL OFFER UNTIL 31/08



ENERGY - DPE



INFORMATION

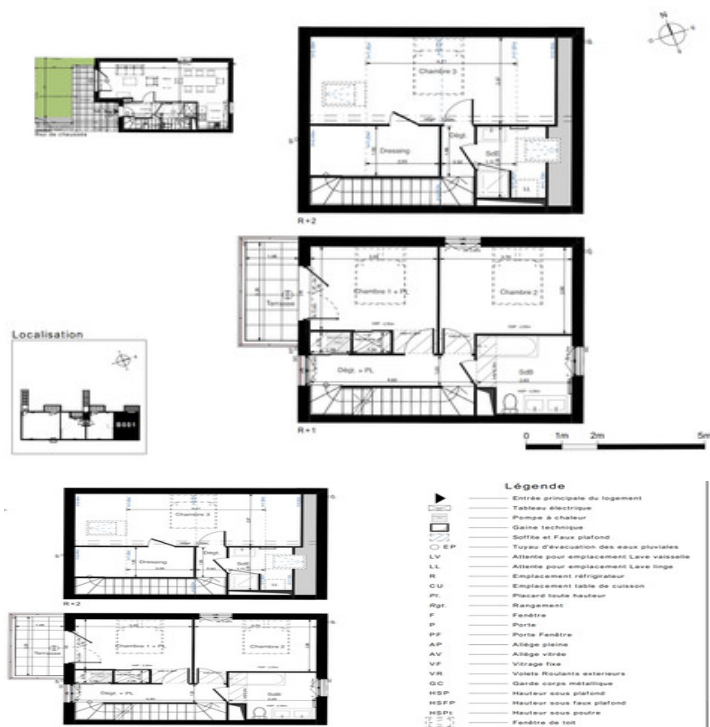
Town:	Le Palais
Department:	Morbihan
Bed:	3
Bath:	3
Floor:	95 m2
Outside Space:	34 m2

IN BRIEF

In the commune of Le Palais in Belle-ile-en-Mer, this superb NEW T4 triplex flat is part of a residence of 30 flats ranging from T2 to T4 triplex, whose architecture is typical of the island's buildings. Just a few minutes from the shops and the beach, Le Palais offers a magnificent living environment steeped in history. New developments are rare on Belle-île-en-Mer and this flat is an opportunity not to be missed. Available from 2Q 2025. Offer valid for bookings made before 31/08.

NB. Quoted prices relate to euro transactions. Fluctuations in exchange rates are not the responsibility of the agency or those representing it. The agency and its representatives are not authorised to make or give guarantees relating to the property. These particulars do not form part of any contract but are to be taken as a general representation of the property. Any areas, measurements or distances are approximate. Text, photographs and plans, where applicable, are for guidance only. Leggett and its representatives have not tested services, equipment or facilities and cannot guarantee the same.

Particulars for off-plan purchases are intended as a guide only. Final finishes to the property may vary. Purchasers are advised to engage a solicitor to check the plans and specifications as laid out in their purchase contract with the developer.



DESCRIPTION

Available 2nd quarter 2025

This west-facing 95 m² T4 flat comprises, on the ground floor, an entrance hall with cupboard, a living room/kitchen, a shower room with WC, a 12.74 m² terrace and a 13.59 m² garden. Ground floor +1: a hallway with cupboard, a bedroom with cupboard and 4.83 m² terrace, a second bedroom, a bathroom with WC. On the ground floor (+2), a corridor, a shower room and a bedroom with dressing room.

Entrance hall 3,34

Living room 28,67

Kitchen ...

NOTES