

Stunning, historical, riverside property close to Saumur in the heart of the Loire Valley.



INFORMATION

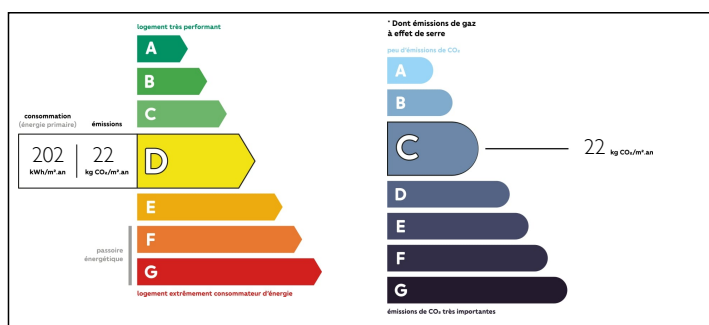
Town:	Varennnes-sur-Loire
Department:	Maine-et-Loire
Bed:	4
Bath:	3
Floor:	205 m2
Plot Size:	2058 m2

IN BRIEF

Located in the heart of the Loire Valley, a few minutes from Saumur, don't miss a rare opportunity to own this fabulous, stone longère with 18th century turret. From the vast open plan living spaces to the hidden rooms, it's full of character and charm,. Step inside and fall in love with the stunning architectural features and stylish interiors. Close to the village and next to the Loire, this four bedroom, three bathroom property with the possibility to expand, is simply stunning.

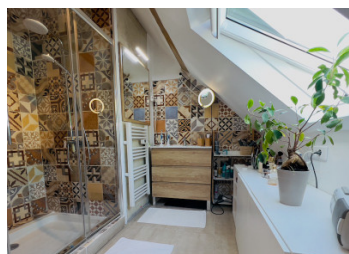


ENERGY - DPE



NB. Quoted prices relate to euro transactions. Fluctuations in exchange rates are not the responsibility of the agency or those representing it. The agency and its representatives are not authorised to make or give guarantees relating to the property. These particulars do not form part of any contract but are to be taken as a general representation of the property. Any areas, measurements or distances are approximate. Text, photographs and plans, where applicable, are for guidance only. Leggett and its representatives have not tested services, equipment or facilities and cannot guarantee the same.

Particulars for off-plan purchases are intended as a guide only. Final finishes to the property may vary. Purchasers are advised to engage a solicitor to check the plans and specifications as laid out in their purchase contract with the developer.



NOTES

DESCRIPTION

The property in detail;

Enter the property into a charming hallway with a beautiful wooden staircase to the first floor, downstairs WC and open stone archways leading on through to the reception rooms.

To the right is a gorgeous sitting room (24.5m²) with double aspect windows and lovely original features; beams, stone archways, open fireplace with insert leading through to the dining room (21.50m²). Both rooms have stone floor tiles, high ceilings and exposed stone walls.

Pass through the dining room and into the fully fitted kitchen with integrated appliances, tiled floor, exposed beams and door to the garden (15m²)

Turning left from the hallway, you enter a stunning cloakroom area with fitted cupboards, open fireplace and wood floor. From here you have access to the first downstairs bedroom (12m²). Beautifully decorated with beams and window to the garden. Head back through the cloakroom into a hidden corridor all in dramatic dark grey with movement sensitive lighting. From here you will find the second downstairs bedroom (11m²), full of character and charm. Next door is the bathroom with corner bath, walk in shower and fitted double vanity. Stylish tiles and original feature wallpaper complete this room. Back down the corridor, is access to the cellar and laundry room with door to the garden..

Heading up the lovely wooden staircase, at the top straight ahead is a small office. Cosy, and with original stone walls and floor, it's perfect for a home office.

To the left is a fabulous loft...