

PLERIN SUR MER , NEW 2 bedroom flat Delivery 4Q2024

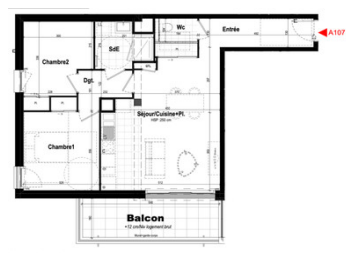
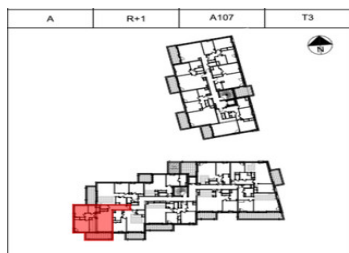


INFORMATION

Town:	Plérin
Department:	Côtes-d'Armor
Bed:	2
Bath:	1
Floor:	66 m2
Outside Space:	10 m2

IN BRIEF

Ideally located in Plérin-sur-Mer, just a short distance from Saint-Brieuc and the surrounding beaches, this small residence of 51 flats puts you at the heart of a friendly town centre on a human scale. The project encourages soft mobility throughout the town and promotes energy savings. DELIVERY 4T2024. 8 LOTS STILL AVAILABLE.



ENERGY - DPE



NB. Quoted prices relate to euro transactions. Fluctuations in exchange rates are not the responsibility of the agency or those representing it. The agency and its representatives are not authorised to make or give guarantees relating to the property. These particulars do not form part of any contract but are to be taken as a general representation of the property. Any areas, measurements or distances are approximate. Text, photographs and plans, where applicable, are for guidance only. Leggett and its representatives have not tested services, equipment or facilities and cannot guarantee the same.

Particulars for off-plan purchases are intended as a guide only. Final finishes to the property may vary. Purchasers are advised to engage a solicitor to check the plans and specifications as laid out in their purchase contract with the developer.

Tableau de surfaces		
Entrée	6,40	m²
Séjour/Cuisine+Pl.	28,65	m²
Chambre1	12,30	m²
Chambre2	9,95	m²
Dgt.	3,36	m²
SdE	4,53	m²
Wc	1,72	m²
Total	66,91	m²
Balcon	10,34	m²

DESCRIPTION

T3 flat, 1st floor, SOUTH facing, living area 66.91 m2, balcony 10.34 m2. Private covered parking. Entrance, separate WC, living room with kitchen and south-facing balcony. Shower room, corridor, 2 bedrooms.

Entrance hall 6.40 m2

Living room/kitchen + dining room 28.65 m2

Bedroom 12.30 m2

Bedroom 9.95 m2

Dgt 3.36 m2

SdE 4.53 m2

WC 1.72 m2

Total 66.91 m2

Balcony 10.34 m2

DELIVERY 4T2024

OTHER T2 and T3 UNITS AVAILABLE FROM 249900 EUROS

Information about risks to which this property is exposed is available on the Géorisques website : <https://www.georisques.gouv.fr>

NOTES