

Detached house, the front part on one level, with full basement and garden in Richelieu



INFORMATION

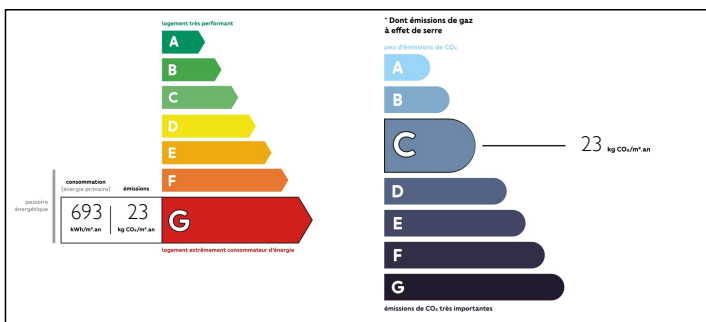
Town:	Richelieu
Department:	Indre-et-Loire
Bed:	2
Bath:	2
Floor:	80 m2
Plot Size:	1081 m2

IN BRIEF

Just a few minutes walk to Richelieu with all its amenities, this detached property with garden benefits from having the main living area on one level. It has double-glazed windows and electric shutters.

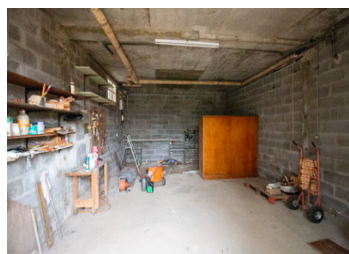


ENERGY - DPE



NB. Quoted prices relate to euro transactions. Fluctuations in exchange rates are not the responsibility of the agency or those representing it. The agency and its representatives are not authorised to make or give guarantees relating to the property. These particulars do not form part of any contract but are to be taken as a general representation of the property. Any areas, measurements or distances are approximate. Text, photographs and plans, where applicable, are for guidance only. Leggett and its representatives have not tested services, equipment or facilities and cannot guarantee the same.

Particulars for off-plan purchases are intended as a guide only. Final finishes to the property may vary. Purchasers are advised to engage a solicitor to check the plans and specifications as laid out in their purchase contract with the developer.



DESCRIPTION

The front part of this detached property is on one level with stairs leading down to a full basement.

On one level :

Kitchen (13m²)

Living room (24m²)

Entrance hall (4.5m²)

Bedroom (12m²)

Bedroom (10m²) with shower room (1m²)

Corridor (5m²) and cupboard (1m²)

Shower room (7m²)

WC (1.5m²)

In the basement :

Summer kitchen (10m²)

Shower room (2.5m²)

Room (28m²)

Garage (36m²)

NOTES

The garden is to the front and rear of the property.
There is ample parking.

Information about risks to which this property is exposed is available on the Géorisques website :
<https://www.georisques.gouv.fr>