

Great stone property, large 4-bedroom house, swimming pool, garden. Superb environment.

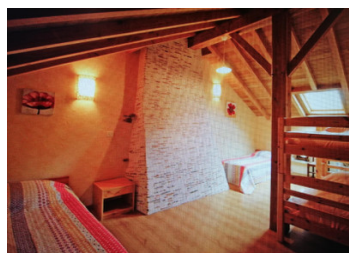
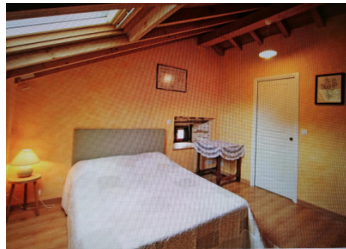


INFORMATION

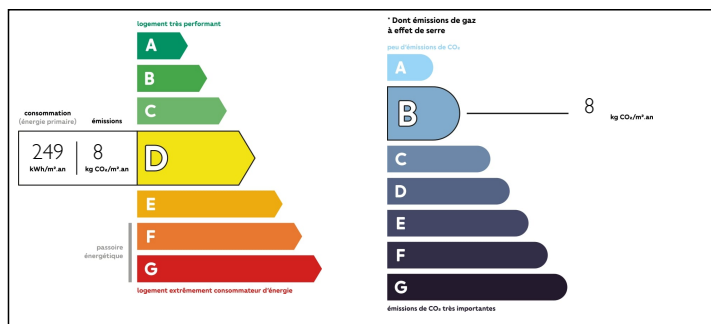
Town:	Cussac
Department:	Haute-Vienne
Bed:	4
Bath:	3
Floor:	150 m2
Plot Size:	3500 m2

IN BRIEF

In a green and very quiet setting, isolated. Terrace with beautiful view on the countryside. Small road serving a small hamlet of a few houses. garden of approximately 3000 m² with larges trees and fenced.

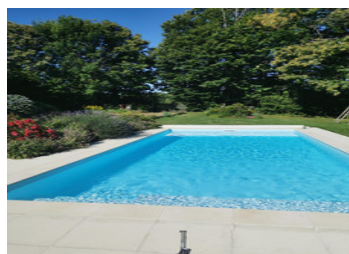


ENERGY - DPE



NB. Quoted prices relate to euro transactions. Fluctuations in exchange rates are not the responsibility of the agency or those representing it. The agency and its representatives are not authorised to make or give guarantees relating to the property. These particulars do not form part of any contract but are to be taken as a general representation of the property. Any areas, measurements or distances are approximate. Text, photographs and plans, where applicable, are for guidance only. Leggett and its representatives have not tested services, equipment or facilities and cannot guarantee the same.

Particulars for off-plan purchases are intended as a guide only. Final finishes to the property may vary. Purchasers are advised to engage a solicitor to check the plans and specifications as laid out in their purchase contract with the developer.



DESCRIPTION

Tastefully restored house. Beautiful stones, exposed beams and staircase all of high quality. Large living room including lounge with magnificent fireplace, dining room and equipped kitchen. On level: double bedroom, bathroom with WC.

Upstairs: a double bedroom with shower room and WC. A double room. Large bedroom that can accommodate several beds. Bathroom with shower and WC.

Attached large stone barn. Fully enclosed front garden, totally private. Swimming pool 4m by 9m heated with heat pump, technical room in the barn. Compliant septic tank and new roof.

2.5 km from a village with all amenities and shops. Very close to tourist and historical sites. In the parc Perigord vert - Limousin. Close to the Charente and the Dordogne.

Information about risks to which this property is exposed is available on the Géorisques website : <https://www.georisques.gouv.fr>

NOTES