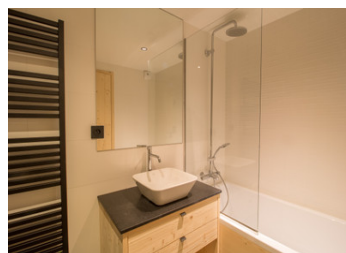
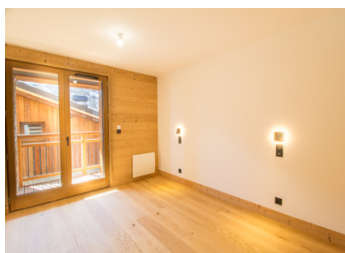


Unique opportunity of a brand new 3 bedroom apartment in the Belleville Valley



INFORMATION

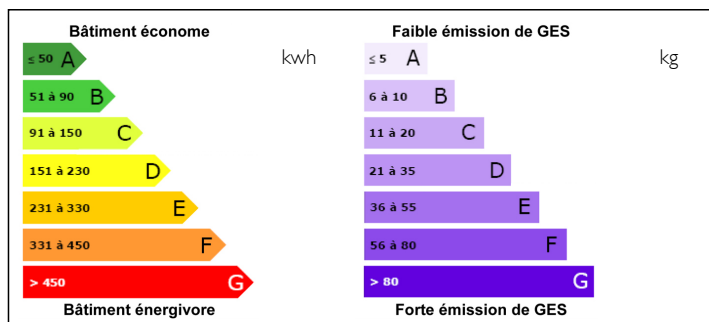
Town:	Saint-Martin-de-Belleville
Department:	Savoie
Bed:	3
Bath:	3
Floor:	130.78 m2
Outside Space:	17 m2



IN BRIEF

This bright and spacious 130sqm 3 bedroom apartment is ideally situated in the quaint village of Le Bettex, with easy access to the Three Valleys ski area.

ENERGY - DPE



NB. Quoted prices relate to euro transactions. Fluctuations in exchange rates are not the responsibility of the agency or those representing it. The agency and its representatives are not authorised to make or give guarantees relating to the property. These particulars do not form part of any contract but are to be taken as a general representation of the property. Any areas, measurements or distances are approximate. Text, photographs and plans, where applicable, are for guidance only. Leggett and its representatives have not tested services, equipment or facilities and cannot guarantee the same.

Particulars for off-plan purchases are intended as a guide only. Final finishes to the property may vary. Purchasers are advised to engage a solicitor to check the plans and specifications as laid out in their purchase contract with the developer.

DESCRIPTION

This apartment is located on the third floor of the residence. It has a long hallway leading to a large, bright living room with a lounge and kitchen area opening onto a west-facing balcony, three good-sized bedrooms with en suite bathrooms and a separate toilet.

This impressive new build development, with its unparalleled location in Le Bettex, offers not only a luxurious living space but also the convenience of being just a stone's throw away from the vibrant village life and world-class skiing opportunities of the Three Valleys.

Located in the French Alps, the Three valleys ski area is one of the world's most popular skiing destinations. Its 600 kilometres of slopes are heaven for winter sports fans. Tucked in the heart of this immense playground, the resort of Les Menuires, which links directly to Le Bettex, offers easy access to the entire ski area which never fails to delight skiers of all levels.

There may be the possibility to reclaim TVA up to 20% of the purchase price if the property is available for rental - conditions apply.

For more information on this property please do not hesitate to contact us.

Please see my portfolio for all our ski properties in the Belleville Valley.

Information about risks to which this property is exposed is available on the Géorisques website : <https://www.georisques.gouv.fr>

NOTES