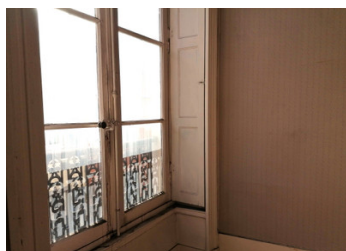
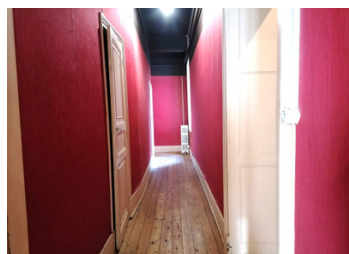


Large second floor apartment in the centre of town offering great development potential.



INFORMATION

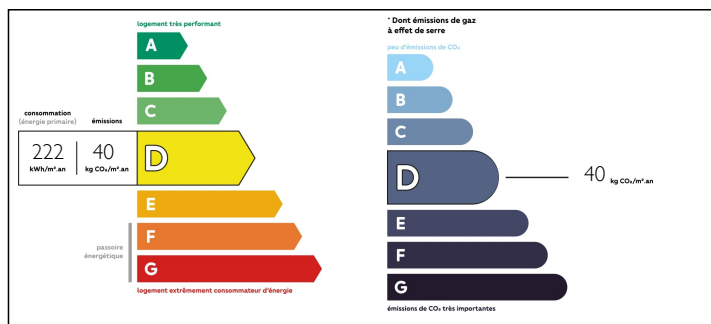
Town:	Mâcon
Department:	Saône-et-Loire
Bed:	2
Bath:	1
Floor:	155 m2
Plot Size:	0 m2



IN BRIEF

This second-floor apartment in the centre Mâcon of offers lots of scope for development. The two separate entrances add to the great potential. The rooms are huge with high ceilings giving a real feeling of space. The period features include windows with interior folding shutters, lovely feature fireplaces, wooden floors, some with original parquet, anterooms, an oratory, and large storage spaces.

ENERGY - DPE



NB. Quoted prices relate to euro transactions. Fluctuations in exchange rates are not the responsibility of the agency or those representing it. The agency and its representatives are not authorised to make or give guarantees relating to the property. These particulars do not form part of any contract but are to be taken as a general representation of the property. Any areas, measurements or distances are approximate. Text, photographs and plans, where applicable, are for guidance only. Leggett and its representatives have not tested services, equipment or facilities and cannot guarantee the same.

Particulars for off-plan purchases are intended as a guide only. Final finishes to the property may vary. Purchasers are advised to engage a solicitor to check the plans and specifications as laid out in their purchase contract with the developer.



NOTES

DESCRIPTION

Mâcon takes great pride in reaching out to the local community and has almost completely finished the project to pedestrianise the centre of town to create a convivial environment for strolling around town and stopping at a terrace for a coffee or a glass of local wine.

In the heart of Mâcon, the charm of the old architectural style will attract you to this property. The rooms are large with high ceilings, parquet floors and lovely fireplaces with decorative overmantels. Yet with all the possibilities of a blank canvas for you to create a fresh and modern apartment of your dreams.

Layout

Entrance hall -7.33m²

Kitchen -with separate external entrance – 15m²

Back kitchen – 2.6m²

Anteroom leading to dining room – 5.6m²

Dining room – 17m²

Cupboard

Hallway – 8m²

WC

Cupboard for water heater

Bathroom – 5.5m²

Bedroom 1- 20m²

Cupboard

Hallway

Bedroom 2, 1 window – 28m²

Cupboard – 2.80m²

Anteroom, 1 window - 2.80m²

Living room, 2 windows – 28.7m²

Anteroom – 5.5m²

Approx. 154.83

Local area:

The town takes great pride in reaching out to the local community and has almost completely finished the project to pedestrianise the centre of town to create a convivial environment for strolling around town and stopping at a terrace for a coffee or a glass