

Modern 2 bedroom property with double garage.



Vue Aérienne



Vue depuis le chemin de Suchet



Vue Nord Est



Vue Sud est



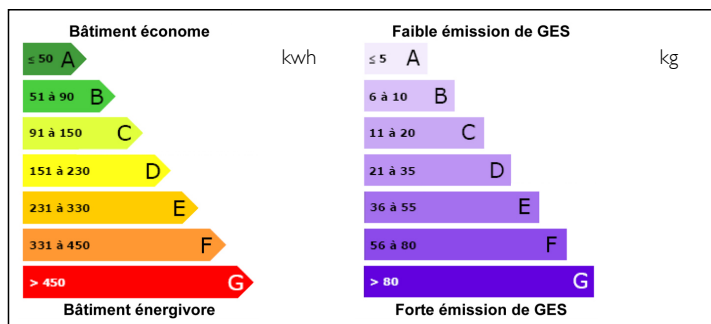
INFORMATION

Town:	Blanzac-lès-Matha
Department:	Charente-Maritime
Bed:	2
Bath:	1
Floor:	92 m2
Plot Size:	1245 m2

IN BRIEF

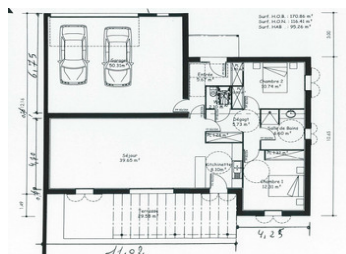
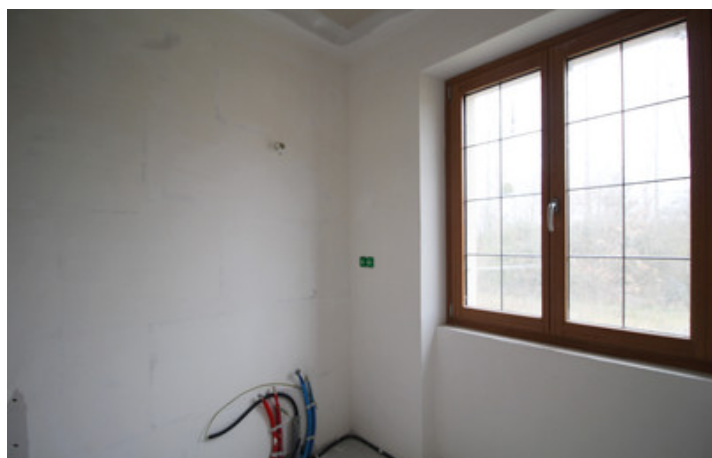
Welcome to your future home! This recently built modern 2-bedroom property offers the perfect combination of contemporary design and functional living spaces. Connected to the house, a practical double garage offers shelter for your vehicles and easy access to the main living space, ensuring comfort and security. The garage is a natural extension of the house, offering easy access even in uncertain weather. The property's two bedrooms, bathroom, separate laundry and boiler room add practicality to the home, ensuring that your daily tasks are both efficient and organized.

ENERGY - DPE



NB. Quoted prices relate to euro transactions. Fluctuations in exchange rates are not the responsibility of the agency or those representing it. The agency and its representatives are not authorised to make or give guarantees relating to the property. These particulars do not form part of any contract but are to be taken as a general representation of the property. Any areas, measurements or distances are approximate. Text, photographs and plans, where applicable, are for guidance only. Leggett and its representatives have not tested services, equipment or facilities and cannot guarantee the same.

Particulars for off-plan purchases are intended as a guide only. Final finishes to the property may vary. Purchasers are advised to engage a solicitor to check the plans and specifications as laid out in their purchase contract with the developer.



DESCRIPTION

Outside, a spacious garden awaits you, ready to receive your personal touch. It offers space for gardening, landscaping or creating an outdoor oasis for relaxation and recreation. The property is strategically located within walking distance of shops, making it easy to access your daily needs.

Although the house is a recent construction, it's ready to receive your personal touch and customization to make it your home. Don't miss the opportunity to make this property yours and create a haven that reflects your style and preferences. Welcome home to modern comfort and convenience!

Information about risks to which this property is exposed is available on the Géorisques website : <https://www.georisques.gouv.fr>

NOTES