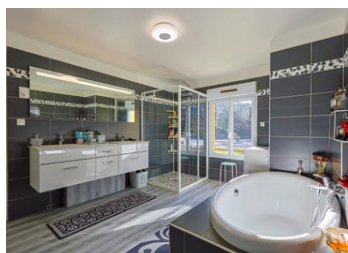
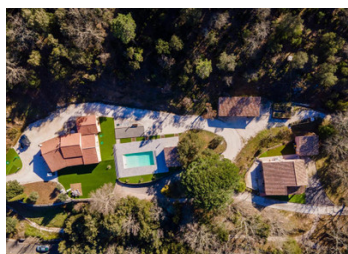
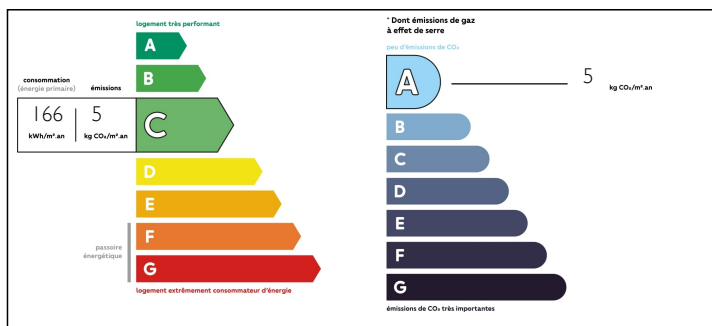


Large family complex with income potential.



ENERGY - DPE



INFORMATION

Town:	Collobrières
Department:	Var
Bed:	6
Bath:	3
Floor:	0 m2
Plot Size:	52000 m2

IN BRIEF

This magnificent property in Collobrières. This is a haven of peace. Consisting of two houses, a swimming pool and various outbuildings, it covers more than 5 hectares.

NB. Quoted prices relate to euro transactions. Fluctuations in exchange rates are not the responsibility of the agency or those representing it. The agency and its representatives are not authorised to make or give guarantees relating to the property. These particulars do not form part of any contract but are to be taken as a general representation of the property. Any areas, measurements or distances are approximate. Text, photographs and plans, where applicable, are for guidance only. Leggett and its representatives have not tested services, equipment or facilities and cannot guarantee the same.

Particulars for off-plan purchases are intended as a guide only. Final finishes to the property may vary. Purchasers are advised to engage a solicitor to check the plans and specifications as laid out in their purchase contract with the developer.



LOCAL TAXES

Taxe foncière: 1 600 EUR

NOTES

DESCRIPTION

This magnificent property in Collobrières (83610) is a haven of peace. Consisting of two houses, a swimming pool and various outbuildings, it covers more than 5 hectares. The details of these two houses are as follows:

First house (142 m², on one level):

Spacious living/ dining room with fireplace, open to a kitchen.

Four rooms to accommodate family or guests.

Two bathrooms for more comfort.

Garage of 25 m² to shelter your vehicles.

Second house (approximately 130 m²):

Ground floor:

Large living/ dining room with fireplace, open to a kitchen.

Two bedrooms, including a master suite.

Pond.

Terrace of 25 m² to enjoy the beautiful days.

Floor:

Mezzanine converted into an office.

Two additional bedrooms.

Shower room and separate toilet.

Garage of 36 m² for your storage needs.

In addition to these features, the property has a well with borehole and a large garage of 72 m² converted into a gym. But the jewel of this set is undoubtedly the magnificent salt water pool (5 meters by 12 meters) with its relaxation area and bowling alley. The setting is exceptional, surrounded by greenery and with stunning views of the Massif des Maures.

Located in the heart of the Maures massif, 35 km from Saint Tropez, 35 km from Sainte Maxime, 30 km from Hyères, 24 km from Grimaud and 25 km from Le Lavandou, this property will seduce you with its peaceful and wooded environment.

You can access each of the two houses by their respective independent entrance.

If you are looking for tranquility, country charm and proximity to nature, this property is a...