

Charming 3 bed stone house with 1-bed gite situated in peaceful countryside

EXCLUSIVE

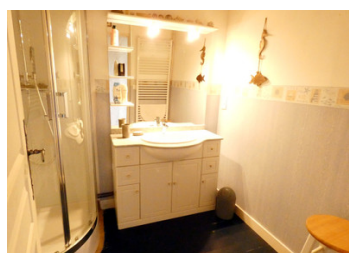


## INFORMATION

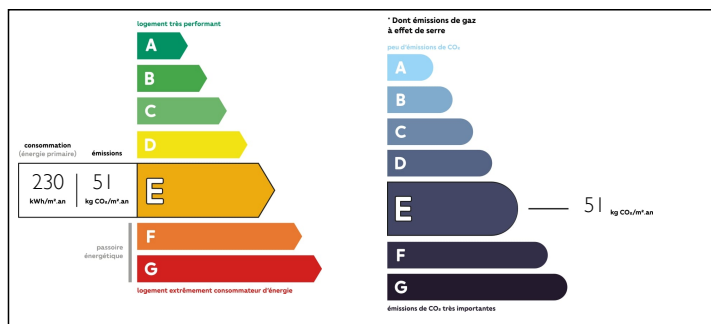
Town:	Montpinchon
Department:	Manche
Bed:	4
Bath:	3
Floor:	112 m2
Plot Size:	1445 m2

## IN BRIEF

Situated at the end of a no-through lane with no passing traffic, well-maintained 3/4 bed semi-detached stone house with adjoining 1-bed self-contained annexe, suitable for use as a gite.



## ENERGY - DPE



NB. Quoted prices relate to euro transactions. Fluctuations in exchange rates are not the responsibility of the agency or those representing it. The agency and its representatives are not authorised to make or give guarantees relating to the property. These particulars do not form part of any contract but are to be taken as a general representation of the property. Any areas, measurements or distances are approximate. Text, photographs and plans, where applicable, are for guidance only. Leggett and its representatives have not tested services, equipment or facilities and cannot guarantee the same.

Particulars for off-plan purchases are intended as a guide only. Final finishes to the property may vary. Purchasers are advised to engage a solicitor to check the plans and specifications as laid out in their purchase contract with the developer.



## DESCRIPTION

Semi-detached house with double glazing and oil-fired heating.

-----  
Information about risks to which this property is exposed is available on the Géorisques website : <https://www.georisques.gouv.fr>



## NOTES