

Land for sale with Certificate of Urbanisation in a pleasant hamlet on the edge of Deux Sevres and the Vienne

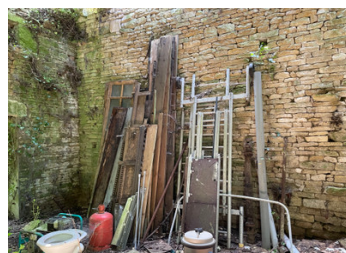
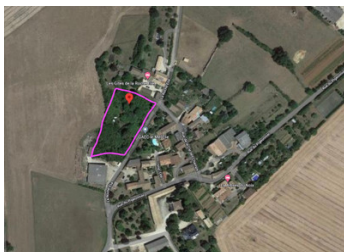


INFORMATION

Town:	Rom
Department:	Deux-Sèvres
Bed:	0
Bath:	0
Floor:	0 m2
Plot Size:	4700 m2

IN BRIEF

Here we have a pleasant piece of land with a Certificate of Urbanisation to construct a house re-using the stones of the original building on the site. There is electricity going to the boundary of the property and it would be easy to get a water supply arranged. The land is 4,700m2 and has mature trees, a small pond and views overlooking the open countryside. The location is on the edge of a small hamlet with a range of attractive houses and holiday homes. It is just 13 minutes to the popular market town of Lezay which has a weekly market, supermarket, boulangerie and bars. The closest airports are Poitiers 46km, La Rochelle 117km and Limoges 119km. Niort with its many shops, bars and restaurants is 54km and it's just one hour and a half to the beautiful Atlantic Coast.



ENERGY - DPE



NB. Quoted prices relate to euro transactions. Fluctuations in exchange rates are not the responsibility of the agency or those representing it. The agency and its representatives are not authorised to make or give guarantees relating to the property. These particulars do not form part of any contract but are to be taken as a general representation of the property. Any areas, measurements or distances are approximate. Text, photographs and plans, where applicable, are for guidance only. Leggett and its representatives have not tested services, equipment or facilities and cannot guarantee the same.

Particulars for off-plan purchases are intended as a guide only. Final finishes to the property may vary. Purchasers are advised to engage a solicitor to check the plans and specifications as laid out in their purchase contract with the developer.



DESCRIPTION

null

Information about risks to which this property is exposed is available on the Géorisques website : <https://www.georisques.gouv.fr>

NOTES