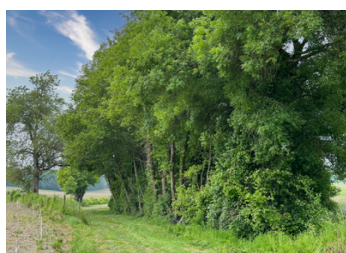


## Field in peaceful location near Chillac



## INFORMATION

Town:	Condéon
Department:	Charente
Bed:	0
Bath:	0
Floor:	0 m2
Plot Size:	6660 m2

## IN BRIEF

An enclosed field of pasture land which could be suitable for horses.

## ENERGY - DPE



NB. Quoted prices relate to euro transactions. Fluctuations in exchange rates are not the responsibility of the agency or those representing it. The agency and its representatives are not authorised to make or give guarantees relating to the property. These particulars do not form part of any contract but are to be taken as a general representation of the property. Any areas, measurements or distances are approximate. Text, photographs and plans, where applicable, are for guidance only. Leggett and its representatives have not tested services, equipment or facilities and cannot guarantee the same.

Particulars for off-plan purchases are intended as a guide only. Final finishes to the property may vary. Purchasers are advised to engage a solicitor to check the plans and specifications as laid out in their purchase contract with the developer.



## DESCRIPTION

Approached down an attractive country lane and set in a calm and tranquil location a short distance from the road this level field is easily accessed.

It could provide an ideal location for a horse or two and is enclosed with posts and wire fencing. It just needs a new gate.

There is a small stream along one side from which water might be drawn to provide for any animals which could be kept there (potentially subject to necessary permissions)

There are shade trees all along one side of this charming plot.

-----

Information about risks to which this property is exposed is available on the Géorisques website : <https://www.georisques.gouv.fr>

## NOTES