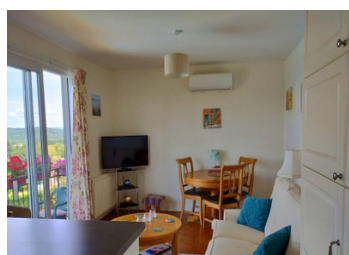
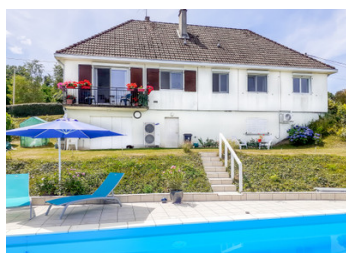
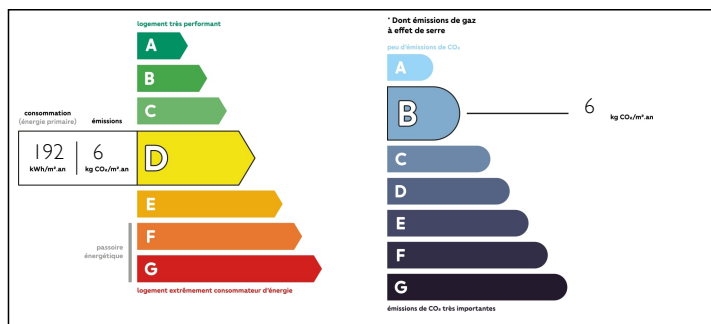


Contemporary 3 bedroom house with garden, heated swimming pool and stunning views.



ENERGY - DPE



INFORMATION

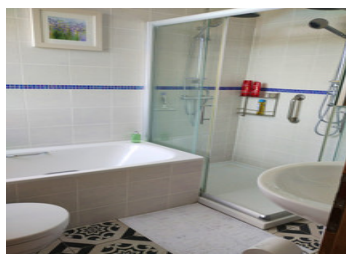
Town:	Masseret
Department:	Corrèze
Bed:	3
Bath:	2
Floor:	140 m2
Plot Size:	2116 m2

IN BRIEF

UNDER OFFER With its outstanding location offering panoramic views and a large heated pool, this exceptional property has it all! The house, which has been tastefully modernised with much attention to detail, comprises a modern kitchen and family room with balcony, a living room, a master bedroom with ensuite bathroom, 2 guest bedrooms with shared bathroom and a small study. It also benefits from a full-size basement with the potential for creating additional living accommodation if required, along with a workshop and garage. A beautifully landscaped garden completes the picture! The house is just a few minutes' walk from the centre of the pretty village of Masseret, which offers a wide range of facilities, including a medical centre, restaurants, a supermarket and a bakery. Fast access is also available to several mainline railway stations and the international airport at Limoges. Highly recommended!

NB. Quoted prices relate to euro transactions. Fluctuations in exchange rates are not the responsibility of the agency or those representing it. The agency and its representatives are not authorised to make or give guarantees relating to the property. These particulars do not form part of any contract but are to be taken as a general representation of the property. Any areas, measurements or distances are approximate. Text, photographs and plans, where applicable, are for guidance only. Leggett and its representatives have not tested services, equipment or facilities and cannot guarantee the same.

Particulars for off-plan purchases are intended as a guide only. Final finishes to the property may vary. Purchasers are advised to engage a solicitor to check the plans and specifications as laid out in their purchase contract with the developer.



DESCRIPTION

The accommodation in this house is set over 2 floors as follows:

Ground floor: The front door opens into a wide hallway, lined with cupboards suitable for coats and shoes. Living room to the right with double doors to the front garden. The kitchen and family room also lead off the entrance hall. The family room has double doors opening onto a balcony with spectacular views. A corridor leads from the entrance hall to the 2 guest bedrooms which share a shower room with WC, and the master bedroom with ensuite bathroom (with bath, shower and bidet). There is a separate WC. There is also a small study or storeroom at the end of the corridor. A ceiling trap opens from the corridor into the loft area. Stairs lead down to the basement.

Lower ground floor: This is a vast space divided into three sections, with room for several vehicles, a workshop, storage areas and wine cellar with earth floor. There is a WC as well at this level and one room has a shower installed. Door to the back garden. The heat pump which provides heating for the house is located at this level by the outside wall.

Outside space: Double gates open from the road onto to a driveway which leads down to the garage and the basement of the house. In front of the house, there is a path from the drive to the front door and a seating area to one...

NOTES