

The certified building plot, = +/- 1,500 m plus small plot of land. 10km Barbezieux and N10

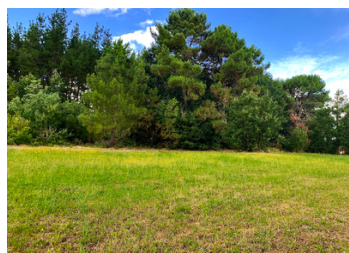
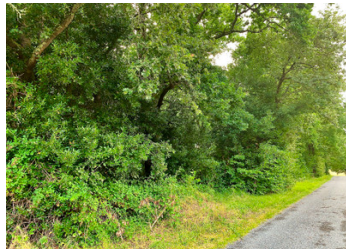
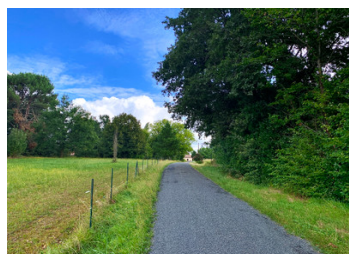


INFORMATION

Town:	Condéon
Department:	Charente
Bed:	0
Bath:	0
Floor:	0 m2
Plot Size:	1780 m2

IN BRIEF

1 of 3 plots of building land, quite situation, 10 minutes from N10 and Barbezieux which has all commerce. 35 minutes to Angoulême and TGV link



ENERGY - DPE



NB. Quoted prices relate to euro transactions. Fluctuations in exchange rates are not the responsibility of the agency or those representing it. The agency and its representatives are not authorised to make or give guarantees relating to the property. These particulars do not form part of any contract but are to be taken as a general representation of the property. Any areas, measurements or distances are approximate. Text, photographs and plans, where applicable, are for guidance only. Leggett and its representatives have not tested services, equipment or facilities and cannot guarantee the same.

Particulars for off-plan purchases are intended as a guide only. Final finishes to the property may vary. Purchasers are advised to engage a solicitor to check the plans and specifications as laid out in their purchase contract with the developer.

DESCRIPTION

1 of 3 plots of building land, quite situation, 10 minutes from N10 and Barbezieux which has all commerce. 35 minutes to Angouleme and TGV link

Information about risks to which this property is exposed is available on the Géorisques website : <https://www.georisques.gouv.fr>

NOTES