

Saint Eloi La Rochelle district, building land with possibility of plot division, permit accepted.



## INFORMATION

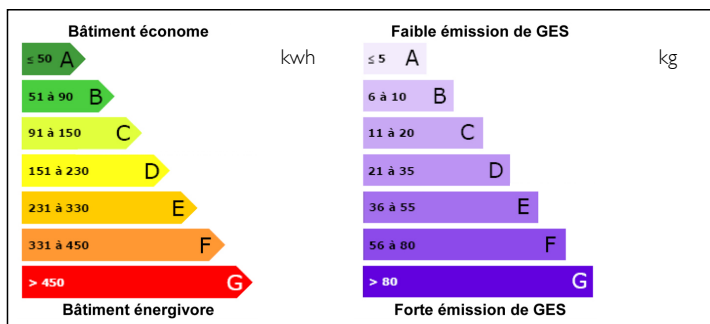
Town:	La Rochelle
Department:	Charente-Maritime
Bed:	0
Bath:	0
Floor:	0 m2
Plot Size:	531 m2

## IN BRIEF

Quiet area with the possibility of making 2 lots or keeping the entire surface for a pretty house with a large garden



## ENERGY - DPE



NB. Quoted prices relate to euro transactions. Fluctuations in exchange rates are not the responsibility of the agency or those representing it. The agency and its representatives are not authorised to make or give guarantees relating to the property. These particulars do not form part of any contract but are to be taken as a general representation of the property. Any areas, measurements or distances are approximate. Text, photographs and plans, where applicable, are for guidance only. Leggett and its representatives have not tested services, equipment or facilities and cannot guarantee the same.

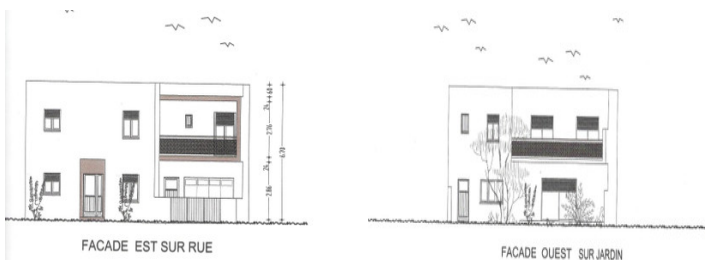
Particulars for off-plan purchases are intended as a guide only. Final finishes to the property may vary. Purchasers are advised to engage a solicitor to check the plans and specifications as laid out in their purchase contract with the developer.



## DESCRIPTION

Saint Eloi district, pretty plot on which the owner has filed a building permit which was accepted by the town hall for a 150 m house with garage. Possibility of plot division to make 2 lots. Plan on request. Very nice business to visit without delay

Information about risks to which this property is exposed is available on the Géorisques website : <https://www.georisques.gouv.fr>



## NOTES