

Under offer Sector La Perrière, farmhouse in a hamlet, with outbuildings , 3842 m of land ...

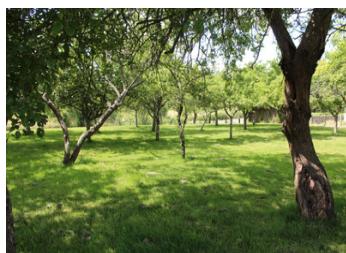


INFORMATION

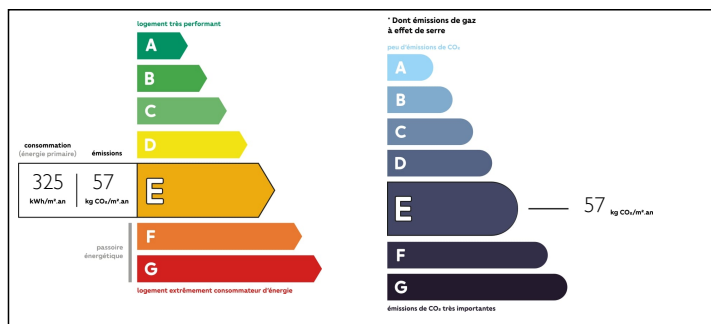
| | |
|-------------|----------|
| Town: | Chemilli |
| Department: | Orne |
| Bed: | 1 |
| Bath: | 1 |
| Floor: | 70 m2 |
| Plot Size: | 3842 m2 |

IN BRIEF

House for sale in the Perche, with outbuildings, land. Lots of potential... La Perrière area, in a hamlet, stone farmhouse on 3842 m² of land with orchard and well...



ENERGY - DPE



NB. Quoted prices relate to euro transactions. Fluctuations in exchange rates are not the responsibility of the agency or those representing it. The agency and its representatives are not authorised to make or give guarantees relating to the property. These particulars do not form part of any contract but are to be taken as a general representation of the property. Any areas, measurements or distances are approximate. Text, photographs and plans, where applicable, are for guidance only. Leggett and its representatives have not tested services, equipment or facilities and cannot guarantee the same.

Particulars for off-plan purchases are intended as a guide only. Final finishes to the property may vary. Purchasers are advised to engage a solicitor to check the plans and specifications as laid out in their purchase contract with the developer.



DESCRIPTION

The farmhouse comprises a kitchen/diner (15m²), living room with fireplace and wood burner (30m²), bedroom (18m²), shower room (6m²) and wc. Attic space above ripe for conversion. Adjoining cellar, boiler room, stables, attics above. Barn, garage, workshop.

Oil-fired heating. Land of 3842 m² with orchard, garden, well.

Part of the land (1500m²) is across the lane.

Information about risks to which this property is exposed is available on the Géorisques website : <https://www.georisques.gouv.fr>

LOCAL TAXES

Taxe foncière: 250 EUR

NOTES