

4 bed property with courtyard, outbuildings and long rear garden

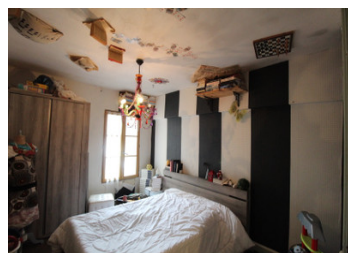
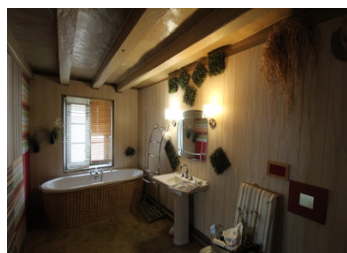


INFORMATION

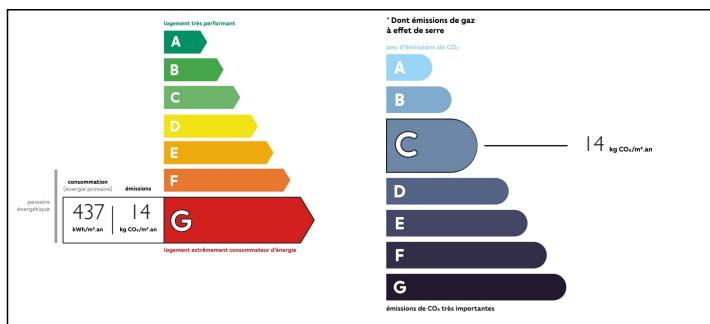
Town:	Betz-le-Château
Department:	Indre-et-Loire
Bed:	4
Bath:	2
Floor:	133 m2
Plot Size:	605 m2

IN BRIEF

Deceptively large 4 bed house comprising on the ground floor, a living room with feature fireplace which leads into a large open plan kitchen/dining room with a pantry and downstairs toilet. There are 2 staircases, one from the living room leading to a first floor games room with access to a large family bathroom and a large double bedroom. The second staircase leads from the dining room and gives access to a bedroom (don't be thinking you have been turned upside down as there are objects fixed to the ceiling!) and then a staircase leading to the converted attic space, which has 2 bedrooms and a shower room which will need some finishing off. Leading outside from the dining room, there is a courtyard with a small storage shed and a large barn. Beyond the barn is a long, secluded back garden. A bit quirky this one and is in...



ENERGY - DPE



NB. Quoted prices relate to euro transactions. Fluctuations in exchange rates are not the responsibility of the agency or those representing it. The agency and its representatives are not authorised to make or give guarantees relating to the property. These particulars do not form part of any contract but are to be taken as a general representation of the property. Any areas, measurements or distances are approximate. Text, photographs and plans, where applicable, are for guidance only. Leggett and its representatives have not tested services, equipment or facilities and cannot guarantee the same.

Particulars for off-plan purchases are intended as a guide only. Final finishes to the property may vary. Purchasers are advised to engage a solicitor to check the plans and specifications as laid out in their purchase contract with the developer.



LOCAL TAXES

Taxe habitation: 350 EUR

NOTES

DESCRIPTION

Deceptively large 4 bed house comprising on the ground floor, a living room with feature fireplace which leads into a large open plan kitchen/dining room with a pantry and downstairs toilet. There are 2 staircases, one from the living room leading to a first floor games room with access to a large family bathroom and a large double bedroom. The second staircase leads from the dining room and gives access to a bedroom (don't be thinking you have been turned upside down as there are objects fixed to the ceiling!) and then a staircase leading to the converted attic space, which has 2 bedrooms and a shower room which will need some finishing off. Leading outside from the dining room, there is a courtyard with a small storage shed and a large barn. Beyond the barn is a long, secluded back garden. A bit quirky this one and is in need of a fair amount of modernising, it lacks private parking but is a really large property at a very attractive price. The village has a private chateau, a beautiful church and amenities include a bakery/cafe and hairdressers. Also within walking distance of the house is a childrens playground and the village lake. The nearest large town is Ligueil (11km). The medieval market town of Loches is approx 18kms. Access to the A10 motorway (Paris/Bordeaux) is around 30km away and Tours with its Ryanair served airport and TGV/LGV (Paris 1hr) is just over 60km....