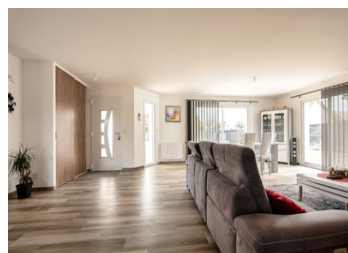
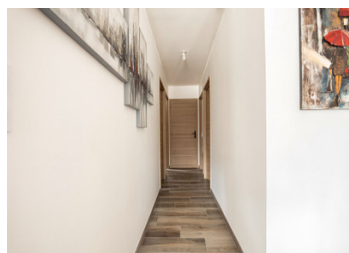


New house in Contres with 126m of living space Bright and spacious 3 bedrooms, large living room Other prope



INFORMATION

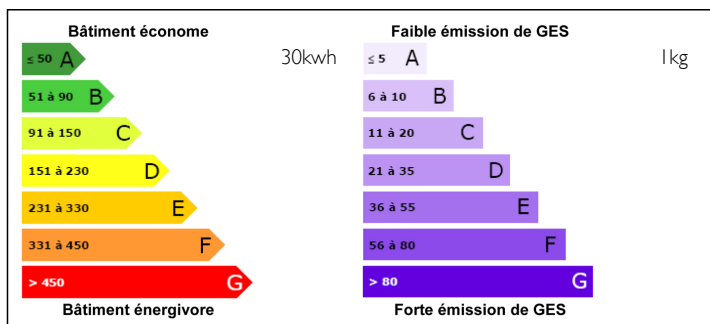
Town:	Le Controis-en-Sologne
Department:	Loir-et-Cher
Bed:	3
Bath:	1
Floor:	126 m2
Plot Size:	1410 m2



IN BRIEF

Very attractive contemporary house built in 2023, on one level, 126.41 m², on a plot of 1410 m² and located close to all shops and services in Controis-en-Sologne. LEGGETT IMMOBILIER CENTRE VAL DE LOIRE This contemporary single-storey house comprises: an entrance-lounge-living room-kitchen (68.07 m²), a pantry (7.28 m²), a corridor (4.00 m²), bedroom 1 (12.61 m²), bedroom 2 (12.61 m²), bedroom 3 (12.61 m²), a bathroom with shower (8.83 m²), a WC (1.50 m²) and a tiled garage (21.18 m²).

ENERGY - DPE



NB. Quoted prices relate to euro transactions. Fluctuations in exchange rates are not the responsibility of the agency or those representing it. The agency and its representatives are not authorised to make or give guarantees relating to the property. These particulars do not form part of any contract but are to be taken as a general representation of the property. Any areas, measurements or distances are approximate. Text, photographs and plans, where applicable, are for guidance only. Leggett and its representatives have not tested services, equipment or facilities and cannot guarantee the same.

Particulars for off-plan purchases are intended as a guide only. Final finishes to the property may vary. Purchasers are advised to engage a solicitor to check the plans and specifications as laid out in their purchase contract with the developer.



DESCRIPTION

Very attractive single-storey contemporary house built in 2023, measuring 126.41 m², set in 1410 m² of land and located close to all shops and services in Controis-en-Sologne. This single-storey contemporary house comprises: an entrance-lounge-living room-kitchen (68.07 m²), a pantry (7.28 m²), a corridor (4.00 m²), bedroom 1 (12.61 m²), bedroom 2 (12.61 m²), bedroom 3 (12.61 m²), a bathroom with shower (8.83 m²), a toilet (1.50 m²) and a tiled garage (21.18 m²). MY OPINION: It's brand new and spacious. Electric heating and pellet stove. Aluminium double glazed windows. Electric shutters. Hot water via 300 L thermodynamic tank. Roller shutters throughout the house. Electric gate with videophone. Electric garage door. Slate roof. Mains drainage. The property is fully fenced and laid to lawn. The house faces south-west and is therefore very light. Property tax: not known at this time. The property has fibre. MY ADVICE: The house is brand new and spacious. Electric heating and pellet stove. Double glazed aluminium frames. Electric shutters. Hot water via 300 L thermodynamic tank. Roller shutters throughout the house. Electric gate with videophone. Electric garage door. Slate roof. Mains drainage. The property is fully fenced and laid to lawn. The house faces south-west and is therefore very light. Property tax: not known at this time. The property has fibre. MY ADVICE: would be ideal for a retired couple or a single person looking for both the practicality of a single-storey home and the comfort of a new build,...

NOTES